

# BLUES REVIEW

THE OFFICIAL MATCHDAY MAGAZINE OF MACCLESFIELD TOWN F.C.

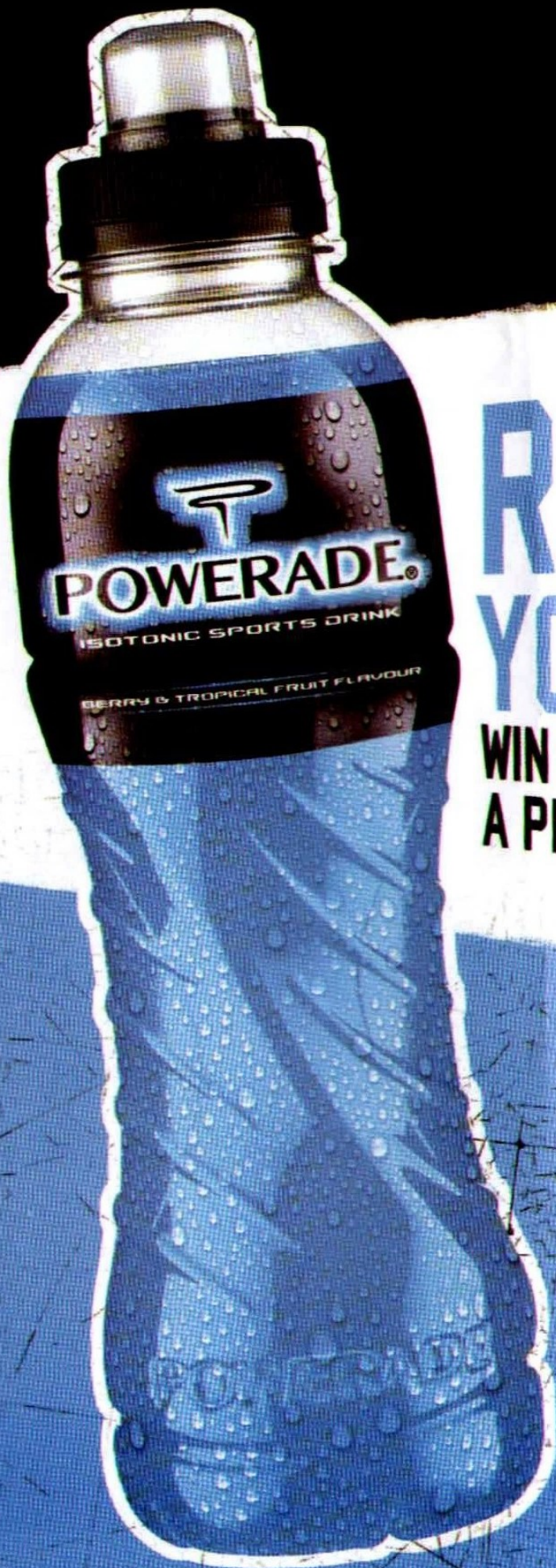


## SWINDON TOWN

COCA-COLA LEAGUE TWO

Saturday 23rd December 2006. Kick-off 3.00pm

Price: £2.00



# RAISE YOUR GAME

## WIN YOUR TEAM A PROFESSIONAL COACH.

Whether the team you play for is bottom of the league or fighting for the title, Powerade can help. We've teamed up with Virgin Radio to offer you the chance to win a Football League Coach. For more details and to register your team visit [www.virginradio.co.uk](http://www.virginradio.co.uk)

Inspired by athletes.  
Developed by scientists.  
Recommended by  
Football League coaches.



POWERADE IS A REGISTERED TRADEMARK OF THE COCA-COLA COMPANY

# paul ince

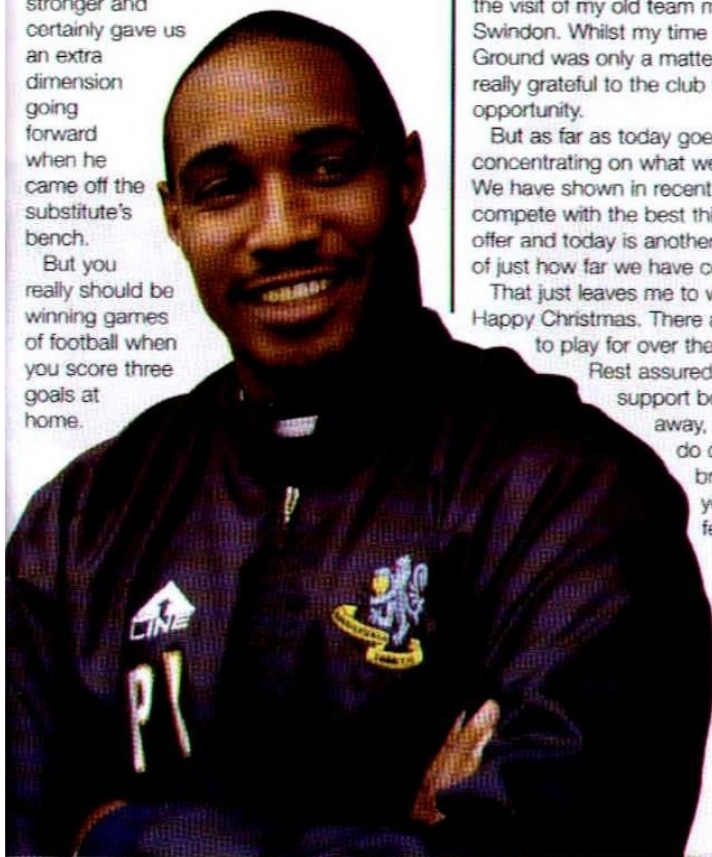
## THE GUV'NOR

*Having set ourselves a very high standard in the previous game at Notts County I was looking to see another step forward against a team struggling for form when we faced Accrington.*

But we never really got going at all in the first half, and Ray and I made our feelings known in no uncertain terms when we got them back in at the break.

We got the reaction we wanted. From the very first whistle we were first to the ball and managed to stretch them at the back by getting the ball out wide. I was particularly pleased with the quality of our goals. I don't like singling out players but on this occasion I think it is appropriate. Some weeks ago I sat down and had a long chat with Matty Tipton. It was a very frank conversation in which I made my views known. His response has been fantastic. He has come back fitter and stronger and certainly gave us an extra dimension going forward when he came off the substitute's bench.

But you really should be winning games of football when you score three goals at home.



In the lads' defence Accrington's second goal was down to a very poor decision by the referee after he awarded them a free-kick just outside of the box.

Those of you at the game will know that I made by feelings known at the time. And my frustration was made worse when I saw the video after the game.

Kevin timed his tackle to perfection but unfortunately the referee didn't see it that way. It won't change the result but we have sent a copy of the tape to the appropriate authorities.

What isn't acceptable is the manner of their third goal. With seconds to go on the watch we lost possession from our throw-in and let their player through unchallenged. We have to learn from mistakes like that but on the positive the gap to safety is now down to just six points, which sounds a lot better than it did a few weeks ago.

We need to continue this run today with the visit of my old team mates from Swindon. Whilst my time at the County Ground was only a matter of weeks I was really grateful to the club for the opportunity.

But as far as today goes I am concentrating on what we are capable of. We have shown in recent weeks we can compete with the best this league has to offer and today is another good measure of just how far we have come.

That just leaves me to wish you all a very Happy Christmas. There are lots of points to play for over the next few weeks.

Rest assured, with your support both home and away, we will striving to do our very best to bring a smile to your face over the festive period.

Up the  
Silkmen!

*Paul Ince*

## MACCLESFIELD TOWN FC

Moss Rose Stadium

London Road, Macclesfield, SK11 7SP

Telephone: 01625 264686

Fax: 01625 264692

Official website: [www.mtfc.co.uk](http://www.mtfc.co.uk)

email: [office@mtfc.co.uk](mailto:office@mtfc.co.uk) (general enquiries)

Life Presidents:

Allan Brocklehurst,  
Sammy McIlroy MBE,  
Roy Higginbotham,  
Alan Cash

Life Vice-Presidents:

Reg Flower,  
Colin Garlick

Chairman:

Rob Bickerton

Chief Executive:

Patrick Nelson

Directors:

Geoff Findlow  
Derek Astbury,  
Amar Alkadhi,  
Bashar Alkadhi

Company Secretary/Director:

Barrie Darcey

Associate Director:

Roy Higginbotham

Manager:

Paul Ince

Assistant Manager:

Ray Mathias

Player/Coach:

Ian Brightwell

Fitness Coach:

Duncan Russell

Physio:

Paul Lake

Club Doctor:

Dr Simon Somerville

Club Chiroprapist:

Mark Hughan (01625) 424227

Youth Team Manager:

John Askey

Centre of Excellence Manager:

Mick Holgate

Admin Assistant:

Julie Briggs

Sales Manager:

Jef Tyler

Head Chef:

Richard Astbury

Website Editor:

Rob McDonald

Programme Editor:

Richard Stanton/Martin Naylor

Photography:

Ray Bradbury, Empics, Richard Stanton

FITC Officer:

Ian Cosier

Groundsman:

Mark Patterson

Assistant Groundsman:

Mark Mathers

Club Chaplain:

Revd Steve Dunn

Kit Man:

Paul Etchells

## A WORD FROM OUR SPONSORS...

### Support the team and get a chance to be in it too!

Stuck for a last minute Christmas gift? Time is running out so pop into your local Cheshire Building Society branch to open an account for someone you know and put them in with a chance of winning a fantastic prize!

As club sponsor, Cheshire Building Society is running a 'Money Can't Buy' competition in partnership with Macclesfield Town giving fans the opportunity to become a registered member of the squad until the end of this season. As a registered member, the winner will have the chance to appear in the match day programme and wear an official Macclesfield Town shirt bearing their name. All fans under the age of 18 who open up the Society's new Roary's Junior Silkmen

Saver account or fans aged over 18 who open a Silkmen Saver account by 31st January 2007, as well as existing account holders, will be automatically entered into the competition. There will also be chances to win a signed football and signed shirt. Make sure you get your account opened before the deadline to ensure entry into the competition.

As well as giving you the chance to be a part of the team, both the Roary's Junior Silkmen Saver and the Silkmen Saver accounts provide holders with a competitive return on their savings and help to raise funds for the club. The Society donates from its own funds 1% of the average total balances each year. That extra cash could really make the difference for the Club; helping to bring the young stars of the future through to first team places or strengthening

the existing squad.

To find out more about how this account operates and to enter the 'Money Can't Buy' competition visit our website at [thecheshire.co.uk](http://thecheshire.co.uk) or pick up a leaflet from the Club shop after the game.

Teaming up with the Cheshire to support your club couldn't be easier. Simply apply for either a Roary's Junior Silkmen saver or Silkmen Saver account online at [thecheshire.co.uk](http://thecheshire.co.uk), call our Customer Contact Centre on 0845 755 0555 or visit your nearest branch of the Cheshire.

Your money should be giving you the kind of performance you expect of the team so make sure it's with the Cheshire.

**Maria Mathieson**

CSR & Sponsorships Manager  
Cheshire Building Society



**CHESHIRE**  
BUILDING SOCIETY

[thecheshire.co.uk](http://thecheshire.co.uk)

# Proud to be part of the team

Cheshire Building Society  
are proud to be the main club  
sponsors of Macclesfield Town  
Football Club

## ROB BICKERTON

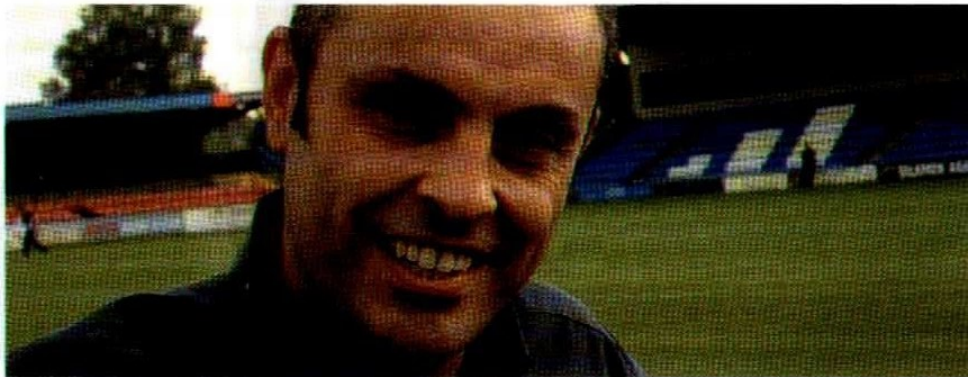
*It will be very interesting to see the crowd for today's game as traditionally the Saturday before Christmas sees one of the lowest attendances of the season.*

With the lure of last minute shopping and the pressure to have everything done and dusted in time for the big day you can perhaps understand why people choose to give the football a miss.

However in recent weeks, slowly but surely our gates have started to pick up. Last week's encounter with Accrington saw the largest home following in a few months which is great news and something we hope will continue. So a big thank you to everyone attending today and a special mention to those having made the long trip north from Swindon. At the best of times it isn't the easiest of journeys, so to have made the effort in this weather is testimony to your support for the club.

Today will be a big test for Paul and the lads. Swindon have been there or thereabouts all season and it will be a great marker for us to judge just how far we have progressed as a team. There were certainly signs there last weekend and whilst it is never nice to concede a goal so late on, I left the game further encouraged and more confident that we can escape.

Spirits certainly weren't dampened when I headed to the ticket office after the game.



There was quite a queue of people waiting for Chelsea tickets and that was great to see. And despite the wait, everyone was in good spirits and looking forward to the day. One of my jobs was to hand out chocolates to those in the queue. It certainly pleased one young fan, who said I could stay on as Chairman as a result of him getting his favourite strawberry Quality Street. I will have to remember that for the future!

The game has certainly captured the imagination and to sell out of close to 5000 tickets is a fantastic effort.

Watch out London, here we come. My only disappointment, if that is the right word, is that some people buying tickets after the game on Saturday hadn't actually been to

the match. Therein lays our challenge, to convince these fans to pay more regular visits to the Moss Rose.

Hopefully another good result today, and over the Festive period will be just what the doctor ordered. There are some vital games to be played and points up for grabs, before we head south to London so we need all the support we can muster. And I am sure you will get behind the team again this afternoon.

Whatever the result today can I wish everyone a very happy Christmas and we look forward to seeing you all back here for our first game of 2007, another tricky test with the visit of Lincoln.

Up the Silkmen,

*Rob Bickerton Chairman*

## BLUE LEADER

*After six games, and over a month on the sidelines, it was great to make the squad last Saturday albeit from the relative safety of the bench.*

Nothing beats the buzz of a match day. You certainly miss it when you are not involved. I know I do, which is why, with another full week's training under my belt I am itching to get out there once again.

For teams with a small squad like ours, Christmas is always a tricky time of year. Four games in the space of eight days is bound to take its toll, especially at my age! However I am confident that we have never been better prepared for the challenge thanks to the support of Paul and the management team.

But of course the best antidote for the

inevitable aches and pains is to continue our unbeaten run, which funny enough goes back to when I got injured. Pure coincidence I assure you! Confidence has been a big thing for the side in recent weeks. You saw that last weekend. Despite a relatively slow start we fought back well against a lively Stanley side who were clearly looking to prove a point after a string of poor results.

It was therefore extremely disappointing to get caught with a real sucker punch in injury time. Certainly a case of two points lost and something we have been working hard on in training this week. We have however the perfect opportunity today to show how far we have progressed. Swindon will be a tough task, but as our displays against Notts County, Walsall and Hartlepool have shown that we seem to do better against the top teams.



Let's hope we can add Paul Sturrock's team to the list!

Enjoy the game today and on behalf of the team I would like to wish everyone a very happy Christmas and here's hoping 2007 is a good one for Macc!

*Dave Morley*

# going to stamford bridge?

# FA CUP NEWS

The FA  
CUP



## CHelsea HERE WE COME!

Our big day is just two weeks away and, with all our ticket allocation sold it promises to be a fantastic day out for everyone concerned with Macclesfield Town Football Club. The M6 is going to be a sea of blue as a fleet of 70 coaches are due to make the 186 mile journey to West London!

But as you can imagine, transporting 3,000 fans by coach is going to be a challenge. We have been liaising with the local authority and both the Cheshire and Metropolitan Police to ensure the operation runs as smoothly as possible. Our plans for the day follow but we cannot stress how important it is that you follow the instructions. Everyone at the club would like to thank you in advance for your co-operation and also for the fantastic support you have shown the club.

## SOLD OUT

The sold out signs went up at the Moss Rose earlier this week when the last of the 4,500 or so tickets were sold. Some have queried why we could not get more. Chief Executive Patrick Nelson explains. "After speaking to Chelsea they were confident that they could sell out their allocation of ticket fairly easily.

The implication of this was that we would have to guarantee the sales of whatever allocation we decided to take. In the end we went for 4,500 as we wanted to give as many fans the chance of seeing them play at Stamford Bridge. When you consider our average home gate is 1,895 it was quite a risk. The next step up would have been a further 1,500 tickets. Unfortunately this has meant some fans have missed out but we did try and encourage people to buy their tickets as soon as possible. But that aside

we have been overwhelmed by the fantastic response and I hope everyone has a memorable day out."

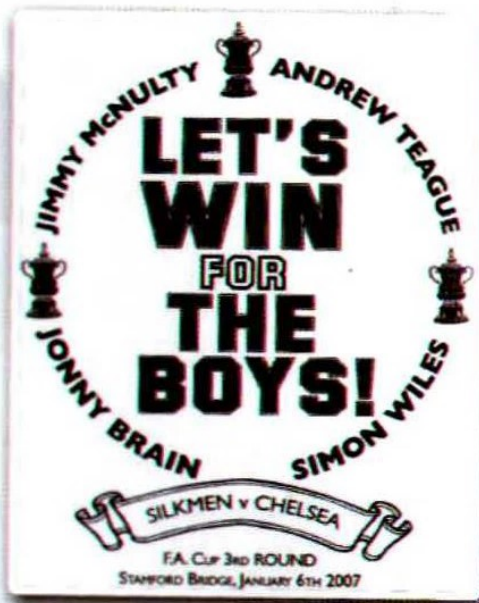
## IMPORTANT COACH DETAILS

Everyone requesting coach travel was given a coach voucher. Each of those vouchers clearly stated a coach number. This is the coach you have been allocated to, and it is imperative for the system to work that you make your way to this coach. Coaches will be clearly numbered and here is the plan we are asking you to help us with.

- Coaches will leave from the Lyme Green Business Park (two minutes walk from the Moss Rose)
- Each coach will be numbered. PLEASE HEAD FOR THE COACH AS INDICATED ON YOUR TICKET
- You should aim to arrive at the departure point between 8.15am and 8.30am. Stewards will be on hand to direct you to your coaches. As you can imagine with 3,000 people in the vicinity it is going to rely on your help in making this run as smoothly as possible
- Coaches will start to depart shortly after. We are aiming to get the last coach away no later than 9.15am.
- Please make sure you get there as early as possible as we will not be able to wait. And wherever possible please park away from the Business Park or arrange to be dropped off.
- Journey time to London is approximately 4 and a half hours which should allow you plenty of time to soak in the Big Match atmosphere.
- Coaches will drop fans off back at the Moss Rose around 10pm if a speedy departure from London is achieved.

## STAMFORD BRIDGE

Because of the number of coaches, which is far more than the Police are used to dealing with, we will be dropping off fans at specially designated points. At worst these will be a five minute walk from the ground. Maps will be provided on the coach to direct you to the ground. Please ensure that after the game you head back to the same place as where you disembarked. And as before please head for your designated coach.



## WEAR YOUR COLOURS

To avoid a clash with Chelsea's home kit, we will be wearing our black kit on the day of the game. All sizes of our away kit are available from the club shop today. Also look out for our temporary shop in the Lyme Green Business Park on the day of the game. All the usual goodies will be on sale, including the limited edition t-shirt (proceeds of which go to our injured lads).

All that remains to be said is that we hope you have a fantastic day out. Wear your colours with pride and make Macclesfield proud of you!



all the latest...

# TALK OF THE TOWN



## A-LINE PLAYER OF THE MONTH

Congratulations go to Jimmy McNulty who is seen here receiving his A-Line Player of the Month award at half-time during last weekend's game with Accrington Stanley. "I was delighted to pick up the award for November and hopefully it won't be my last," enthused Jimmy. "The reception I got from the fans was brilliant and gave me a big lift. Hopefully I will get the chance to repay them later this season."

You can cast your vote for December by visiting the official club website at [www.mtfc.co.uk](http://www.mtfc.co.uk) Voting is already underway with Asmir Begovic and Colin Heath amongst the early pace setters.

## TODAY'S REFEREE

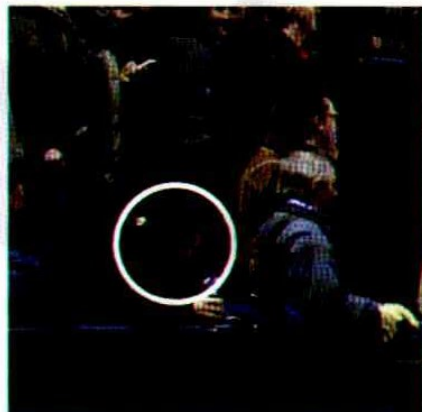
Officiating today's game is Eddie Ilderton from Tyne and Wear. Eddie has been a busy man, today's game his 19th of the current season. In those fixtures he has issued five red and 57 yellow cards. Three of those came back in August when Swindon visited Darlington, the Robins coming away with all three points after a 2-1 victory with goals from Paul Evans and Christian Roberts. Eddie also took charge of our trip to Wrexham which ended in a goalless draw, captain Dave Morley picking up a yellow on the day.

## FACE IN THE CROWD

Congratulations if you are circled in the picture because it means you're our first Face in the Crowd winner!

And that means you have won a first team shirt which we will get signed by the player of your choice. All you have to do to claim your

prize is call us on 01625 264686 and make arrangements to identify yourself and we will do the rest.



## YOUTH TEAM UPDATE

It has been a frustrating time for the youth team. First came the postponement of their eagerly awaited encounter with Everton in the Third round of the FA Youth Cup. This was followed up by a narrow defeat to a very strong Chester team last Saturday morning.

With the Silkmen's numbers depleted by injury, the game was always going to be tough given Chester had knocked Tottenham Hotspur out of the FA Youth Cup during the week before the game. Notable absentees were goalkeeper Matt Cooper, Daniel White and Mike Jefferies (who continues to feature with the first team). And so it proved to be when the home side raced to a 2-0 lead. However the Silkmen showed a lot of character and got back into the game with a Nick Blackburn goal. Despite good spells of pressure the lads were unable to draw level and were disappointed not to have picked up at least a point.

Coach John Askey however was pleased overall with the efforts of his side. "Despite the loss we still did well and enjoyed plenty of pressure. It's good that we are still creating chances but it just wasn't our day today. The most important thing was to get back playing after missing playing in midweek against Everton. The injuries also meant I was able to give one or two players a game who wouldn't normally have been so involved."

## CHAPLAIN'S CHAT

Being Silkmen Chaplain for the past three months has felt like a full time job at times, broken leg x 3, all the other injuries and the shocking winless run, although thank God that is behind us now. It has been a difficult time to be a Macc Town fan but the way that Incey and the lads are grafting so hard means that if anyone can drag us out of this situation it's them.

Needless to say I am a man of faith, as many of you are also, and we've certainly needed to have a lot of faith to stick with the cause this far.

Some people would suggest that we need a miracle to see us climb the league, (plenty of effort and a bit of guile would seem enough to me) but even if we do need a miracle that's ok, because I for one really do believe in miracles and I'm reminded of this in no small way as I look forward to Christmas which not only tells us but shows us God and His love for us through Christ Jesus.

The Chelsea draw has given us all a boost, enhanced by a fantastic gesture by the Club to provide us all with free coach travel. Exciting though this once in a lifetime trip is a fistful of points from the Christmas league programme would be even more welcome. The impact and benefit of some much needed points won now would last well beyond the Christmas season equally the Good News of Christ's birth is there for us always, I pray that we would be ready to welcome Him now, and remember Him throughout the year.

I'd like to take this opportunity to thank the Club for welcoming me so warmly and wish them every success with the remainder of the season. I've been asked to pray, just once or twice for better results, let's hope there will be more wins than anything else and we'll be ok. Wishing you all a very happy Christmas and a peaceful 2007.

*Rev. Stephen Dunn*

The FA Youth Cup Third Round Tie against Everton has been rescheduled for the 5th January 2007, at the Moss Rose, kick off at 7pm.

**90 minutes of agonising  
gut-wrenching, nervous,  
nail-biting tension. . .**

**. . . can't wait!!**

**Queensway  
Publishing**

**We know your game**



## MANAGERIAL RECORDS

### Paul Ince

Played 6 Won 2 Drawn 2 Lost 2 For 8  
Against 8  
Av Pts/game 1.33  
Biggest Win(s) Macclesfield 1  
Rochdale 0 (05/12/2006). **Biggest**  
**Loss(es)** Lost 3-2 on 2 occasions

### Paul Sturrock

Played 4 Won 3 Drawn 0 Lost 1 For 5  
Against 3  
Av Pts/game 2.25  
Biggest Win(s) Walsall 0 Swindon 2  
(09/12/2006). **Biggest Loss(es)**  
Mansfield 2 Swindon 0 (05/12/2006).

## MANAGER HEAD TO HEAD RECORD

Played ..0 | Paul Ince .....0 | Paul Sturrock.....0  
Draws ..0 | Goals 0 | Goals 0

### Player with the most...

#### shots

Matthew  
Tipton 27

#### shots on target

Matthew  
Tipton 14

#### shots off target

Kevin  
McIntyre 14

#### assists

Kevin  
McIntyre 3

#### crosses

Kevin  
McIntyre 19

#### fouls

Matty  
McNeil 36

#### free-kicks-won

Matty  
McNeil 35



### GAMES SINCE

0	a win	0
0	a home win	0
0	an away win	0
5	a defeat	1
2	a home defeat	3
5	an away defeat	1
3	a score draw	11
6	a no score draw	27
0	conceding a goal	1
0	scoring a goal	0
5	conceding > 1	1
0	scoring > 1	0
1	keeping a clean sheet	0
6	failing to score	1
0	back to back wins	2
10	back to back defeats	6
0	gaining a point	0
3	losing a point	1
28	win by > one	0
16	loss by > one	1

### Player with the most...

#### shots

Lee  
Peacock 35

#### shots on target

Christian  
Roberts 20

#### shots off target

Lee  
Peacock 18

#### assists

Lee  
Peacock 4

#### crosses

Andy  
Monkhouse 19

#### fouls

Lee  
Peacock 44

#### free-kicks-won

Lee  
Peacock 32

## SHARP SHOOTERS

Macclesfield	CCFL Cup	Tot	Swindon	CCFL Cup	Tot		
Kevin McIntyre	3	1	4	Christian Roberts	6	3	9
Colin Heath	3	0	3	Lee Peacock	5	0	5
Danny Swailes	2	0	2	Paul Evans	3	1	4

## TEAM HEAD TO HEAD RECORD

Played.....0 | Macclesfield wins .....0 | Swindon wins .....0  
Draws .....0 | Goals 0 (0 per game) | Goals 0 (0 per game)  
0-0's .....0 | Times failed to score 0 | Times failed to score 0

### Biggest League win at Macclesfield for each team:

No wins for Macclesfield  
No wins for Swindon



## 2006/07 LEAGUE STATS



24 Position 2  
21 Played 21  
2 Won 12  
7 Drawn 4  
12 Lost 5  
21 Goals For 28  
37 Goals Against 17  
13 Points 40



### Record Against Top Half of Table

W	D	L	RANK	W	D	L	RANK
1	2	8	23	6	2	3	2

### Record Against Bottom Half of Table

W	D	L	RANK	W	D	L	RANK
1	5	4	24	6	2	2	8

### Record When Scoring First

W	D	L	RANK	W	D	L	RANK
2	2	3	24	9	3	2	5

### Record When Conceding First

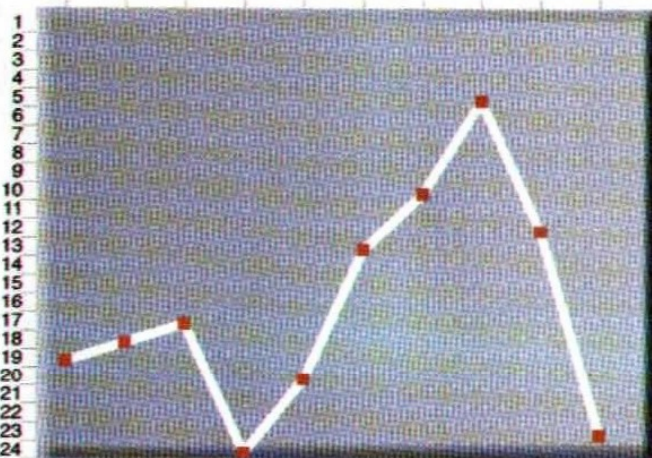
W	D	L	RANK	W	D	L	RANK
0	2	9	22	3	1	3	1

### Match Scores

Wins: 1-0[1], 2-1[1], Losses: 0-1[1], Wins: 1-0[3], 2-0[3], 2-1[5], 3-0[1],  
0-2[2], 0-4[1], 1-2[3], 1-3[1], 2-3[4], Losses: 0-1[2], 0-2[1], 1-2[2],  
Draws: 0-0[3], 1-1[3], 3-3[1] Draws: 1-1[4]

## SWINDON - TEN SEASON RECORD

96/97 97/98 98/99 99/00 00/01 01/02 02/03 03/04 04/05 05/06



FLC FLC FLC FLC FL1 FL1 FL1 FL1 FL1 FL1  
19 18 17 24 20 13 10 5 12 23

\*up to and including 14/12/2006



The Football League's Fans of the Future initiative is aiming to attract the next generation of supporters to watch live football at their local club

Find out more at [www.football-league.co.uk](http://www.football-league.co.uk)



# TALES OF TWO

## TROUBLE AT MILL

Peter Shirtliff's 15-month spell as manager of Mansfield Town at Field Mill ended this week with assistant boss Paul Holland being placed in temporary charge. The Stags have won just one of their last eight matches and have slipped to 18th in the table, four points above the relegation zone. Shirtliff told the club's website: "I'm disappointed but this is a results-based business and the results have not been good enough." He added, "I still believe that two results could have turned things around but that's the situation we find ourselves in. I want to thank the supporters for the support they have shown and the players for their hard work and effort."

Shirtliff took over from Carlton Palmer in September 2005 and turned around the team's fortunes by leading them to league survival last season. But the club has struggled in League Two this season. Chief executive Keith Haslam said: "Unfortunately things haven't worked out the way we both would have liked. I hope Peter gets a very quick return to management and gets better luck in the future."

The news came a day after BBC Radio Nottingham reported the club had been found to have mis-spent £23,000 of Lottery funding.

A Sport England audit had revealed the money, original intended to fund youth development had been spent on other club

expenses. This included first team accommodation and a speeding fine. With a significant majority of Stags' fans unhappy at the way the club is being run, this news, dismissed as 'no big deal' by Mr Haslam, is likely to lead to further calls for the beleaguered Chief Executive, and majority shareholder to leave the club.

## PARKIN SACKED

Rochdale announced earlier this week that they have parted company with Steve Parkin and his assistant Tony Ford, by mutual consent.

This came less than two weeks after the under pressure manager was given the dreaded 'full vote of confidence, by the Board. Dale currently sit 21st in the table after losing seven of their last eight league games including their recent visit to Moss Rose. Parkin had rejoined Rochdale for his second spell in charge at Spotland back in December 2003, having previously managed Dale between 1999 and 2001 before leaving for Barnsley.

"Naturally I am very disappointed to be leaving, but I understand it's results that count," he said in a statement. "I will take with me many fond memories of my time at Rochdale, and look forward to visiting Spotland in the future to catch up with my many friends."

Chairman Chris Dunphy added: "Steve is a true professional and I know how hard he has worked in doing the best he possibly can. Unfortunately, results have not been what we have all been working for, and sadly we feel the time for a change is now."

The ex-Mansfield manager's last game in charge was last Friday's 1-0 defeat at Hartlepool. With Parkin and Ford gone, director of youth football Keith Hill will take over as caretaker manager. BBC Teletext reported the following day that ex-Silk boss Brian Horton was interested in the job.

## SWINDON TO INVESTIGATE TROUBLE

Our opponents today, Swindon Town has begun an investigation after seats were ripped up and thrown at Saturday's match against Bristol Rovers. It would appear that supporters from both teams were involved in the fracas at the County Ground which



● Peter Shirtliff — shown the door at Field Mill

marred an exciting West Country derby, the home side coming from behind to secure a valuable three points and close the gap on leaders Walsall who could only pick up a point away to Wrexham.

The club has been liaising with the police and searching through CCTV footage to identify any troublemakers. A total of 11 arrests were made for assault, public order and drugs offences. Some 130 officers from Wiltshire, Avon & Somerset & British transport police were on duty on the day of the game. The club says it was taking the matter very seriously and will take action against anyone singled out.

Geoff Dunford, chairman of Bristol Rovers, told BBC Radio Bristol: "It is unacceptable. There were women and children sitting there. We are fully behind the Swindon investigation."

## ON THE MOVE?

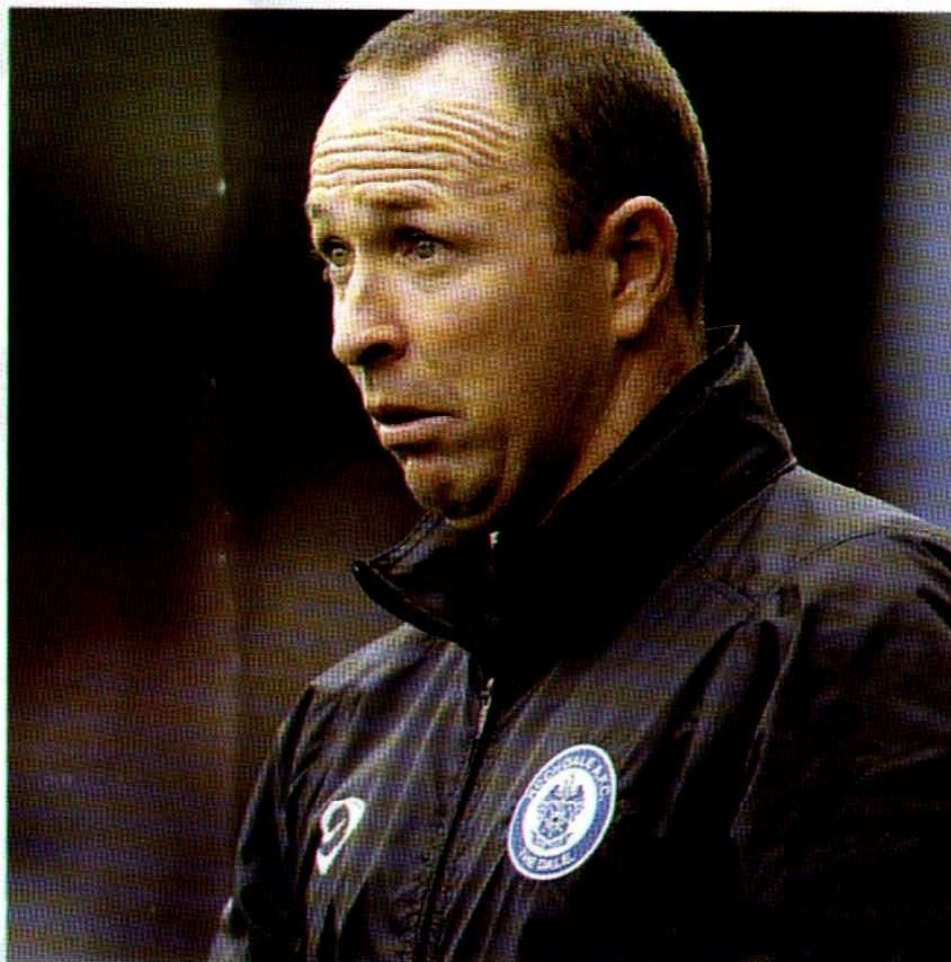
A fans' consortium bidding to take over the running of Swindon Town has tabled a formal application to take control of the club this week. The group is backed by former QPR chairman Bill Power. The club says it is in talks with another potential investor, and is also looking at a proposal to move its stadium near to Chippenham.

The club's general manager, Mike Diamandis, told BBC Radio Wiltshire an "entrepreneur" was interested in investing in the club. "We have been approached to move to junction 17 of the M4, and it is our jobs to look at that. Our preferred route is to stay in Swindon. We will start talks again in the New Year". He added that any potential investors would have to provide sufficient proof of funds.

A spokesman for the club's solicitors said a proposal had been received by the fans' trust. "It does not go into any detail but it has started the ball rolling," he added. The club has been trying to redevelop its town centre site for some time, but the proposed improvements have hit problems with Swindon Borough Council, who own the land the ground is built on, and some residents. The club has already had one proposed development at Shaw Community Forest turned down.

## McGIVERN SET TO BE OUT FOR FOUR MONTHS

Accrington Stanley have been hit by a further injury blow with Leighton McGivern set to miss up to four months with a broken bone in his ankle. The 22-year-old striker is to undergo surgery this week after sustaining the injury in last Saturday's 3-3 draw at the Moss Rose last weekend.



● Steve Parkin — another managerial casualty

The lively front man joined Stanley last month in a deal lasting until the end of the season and had moments earlier given his side the lead with a crisp volley inside the box.

## SHAKERS THROWN OUT

Bury have been thrown out of the FA Cup for fielding an ineligible player in their 3-1 second-round replay win over Chester City on 12 December. Chester have now been reinstated in the competition and will play Ipswich in the third round, as well as receiving the prize due to second-round winners. The case relates to Stephen Turnbull, who is a loan signing from Hartlepool. He played for 80 minutes in the tie at the Deva Stadium. Bury have said they intend to appeal against the decision; the hearing due to take place on Thursday 28 December.

An FA statement said: "Bury selected

Turnbull without receiving the required permission from Hartlepool United and lodging that permission with The FA. The club also failed to comply with the required timescales for registration of players for the FA Cup."

## OPPO'S LAST OUTING

SWINDON TOWN 2 BRISTOL ROVERS 1

Saturday 16 December 2006

Robins' goals: Jutkiewicz 15, Brown 17.

Swindon Town: Phil Smith, Jack Smith, Vincent, Ifil, Williams, Brown (Peacock 68), Weston (Shakes 81), Timlin, Zaaboub, Roberts (Nicholas 89), Jutkiewicz.

Subs Not Used: Stewart, Pook.

Sent Off: None.

Booked: Roberts, Timlin, Jack Smith.

Attendance: 10,010

# MANAGE MACC

## NIP AND TUCK AT THE TOP

After enjoying top spot for the last month or so George William's Horton's Heroes have finally been caught.

The new joint leaders are Mike's Macc, managed by 21 year old Michael Fisher, whose 17 points from last weekend's game against Accrington Stanley was enough to bridge the one point gap.

We managed to track down Mike, a lifelong Silkmen who once appeared as a mascot in our Conference days, from his tax haven in Leeds to find out a little more about the surprise package of this year's competition.

"Clearly I am delighted to join George at the top of the table especially as this is my first managerial job.

"Like all good managers I am a great believer in clichés. We will therefore certainly be taking each game as it comes," commented Mike.

Mike actually made no changes in the first Transfer Window although he was forced to use his substitute Colin Heath, when Marvin Robinson left for Oxford. But he will be keeping his options open when the window opens again in January.

"I have had approval from my boss, the girlfriend, to spend some money next month so I will be looking to strengthen the squad," Michael added.

"Sophia and I, together with several friends are heading down to London for the Chelsea game.

"But rumours that we are due to meet with Andre Shevchenko's people is just paper talk!"

## THE REST OF THE PACK

The visit of Accrington Stanley this time last week proved to be the best week ever for points. A massive 465 points were scored, with Neil Heroes leading the way with a whopping 21 points.

That is just two points off the highest ever score for one game, set by Peter Owen's team back in September. This helped Neil Hayes team climb four places to 21st in the table.

Elsewhere the positions remained fairly static as all eyes look towards the January transfer window.

## SACKED!

One manager who will not feature in the New Year is the wife. Despite several warnings her team has remained rooted in the relegation positions.

I was left with no alternative this week to dispense with her services when it was revealed she failed to show for the Accrington game, preferring to spend her Saturday afternoon shopping for shoes!

It is fair to say that she did not take too kindly to the news and contacted the League Managers' Association. Under their instruction various wifely duties have been withdrawn.

Even worse, as further punishment she

made me watch the final of the X-Factor! I will be taking on the running of the team for the foreseeable future and expect to make changes.

And as seems to be the trend in the game I can confirm that I am in talks with foreign investors with a view to secure some significant investment in the team. The Leek based consortium flew in earlier this week and have already tabled a four figure offer in the region of £20.12.

*Richard Stanton*

## LATEST LEAGUE TABLE

Here is the table after the Accrington Stanley game...

# MANAGE MACC LEAGUE TABLE

The current standings...

PDS	TEAM	MANAGER	ACCRINGTON	TOTAL
1st	Mike's Macc	Michael Fisher	17	172
	Horton's Heroes	George Williams	16	172
3rd	Brian's Silkmen 3	Brian Harradine	16	170
4th	Brian's Silkmen 2	Brian Harradine	17	164
5th	Southern Silk	Nick Brooks	16	160
	Star Line 1 2	Lisp Mulpenhuet	16	160
7th	Brian's Silkmen 1	Brian Harradine	17	158
	Macc Attack	Ian Mackintosh	15	156
9th	Silkmen Stars	Jude Marford	16	155
	Super Six	Mr J D Simpson	17	155
11th	Team Dotside	Lynette Dorrison	17	154
12th	Silk Tigers	Mick Taylor	16	153
13th	Dale's Dynamos	Heather Dale	17	150
	Macc Pie	Richard Stanton	19	150
14th	Silky's Silkmen	Shirley Rubie	16	148
18th	Brian's Silkmen 4	Brian Harradine	17	144
17th	Star Performers	M Cooper / B Hutchinsons	18	142
	Robbie Biter Rocket Fuel	Colin Sowler	19	142
	Moss Rose Magic	George Williams	19	142
	Owen 10	Peter Owen	17	142
	Malvern Rangers	Mr M J Walker	17	142
22nd	Neil's Heroes	Nek Hayes	21	136
23rd	Naked On	Martin Navro	18	136
24th	FJ Superstars	Fraser Mackintosh	17	134
25th	The Macc Barriers	Alex Mackintosh	18	132
26th	Cheshire Cats	Jayne Fishwick	19	131
27th	Buxton Silkmen	Patrik Nelson	19	126
28th	Moss Magic	Tom Hayes	9	114
29th	Challengers	Lisa Stanton	12	97
30th	Te Macc	Robert Smith	0	53

## Twelve games of Christmas...

*There is something special about Christmas. Aside of the obvious religious connotations and a chance to catch up with friends and family, it is a great time to be a football fan.*

The players and managers might not share that view, but with so many games in such a short period of time it is the part of the season I look forward to most.

Boxing Day games have to be my favourite. Over the years I have honed my skills and I can now spot a new jumper, or pair of shocks at 50 yards. And of course, spurred by a larger than average crowd, the atmosphere is usually a lot better. We only have to look back 12 months for perhaps the most perfect of examples. Stockport County came to the Moss Rose and before a crowd of 4,553 thumped 6-0 and sent back to Edgeley Park with their tails firmly between their legs!

### *Derbies*

That was our biggest gate of the season by far. Swindon fans may however disagree but they could probably point to a less than friendly fixture computer. In what is usually the domain of local derbies, the Robins entertained their local rivals from Colchester on Boxing Day last year! At least they had the sight of Rory Fallon's injury time winner to enjoy, assuming they had not left the ground by then.

Has the computer been any kinder this year? Well I suppose we cannot really complain with our trip to

Chester the day after Christmas. Swindon have also fared better and take on Wycombe at the County Ground, which as games go is almost local when compared to who

they might have been drawn against. As for the other games in League 2, well in the main they look fairly well matched. However I do not suppose many Mansfield fans will be looking forward to their 250 mile round trip to Darlington.

The same cannot be said of League 1. Brighton's trip to Port Vale on Boxing is perhaps the worst. But you also have Rotherham travelling to Swansea, Gillingham travelling to Tranmere and Blackpool travelling to Bournemouth to name but three.

### *Disrupt*

You also then have the uncertainty of the weather to cope with. No matter what the year, the weather always seems to do its best to disrupt the festive football programme. I thought this year was going to be different as only the other week I was walking around the town centre in a jumper, as the temperature refused to drop below a very mild 10 degrees. However right on cue the frost and fog has kicked in and we just have to hope it does the decent thing and head north of the border.

I just hope that none of the lads take this cold spell as an excuse to wear some gloves! The Premiership must hold its hand up to this one, and I think the only way to rid the game of this unnecessary evil is an automatic yellow card for anyone not hard enough to get through a game without gloves! And whilst I am on that subject, can I propose an automatic red for anyone wearing white football boots!

And not only that, the Christmas period can shape the rest of the season. And that is why I love it. Have a good one and let's hope 2007 is good one for everyone.

*Richard Stanton*

## SHARP SHOOTERS

Player	Team	Lge	Cup	Ttl
Jermaine Easter	Wycombe	9	5	14
Izale McLeod	MK Dons	11	3	14
Richard Barker	Mansfield	10	3	13
Jamie Forrester	Lincoln City	13	0	13
Andy Bishop	Bury	6	6	12
Mark Stallard	Lincoln City	9	1	10
Michael Symes	Shrewsbury	6	4	10
Chris Dagnall	Rochdale	8	1	9
Tommy Mooney	Wycombe	8	1	9

## WHERE TO SEE GOALS (By Ground)

Ground	Home Team	M	Gls	G/Mt
London Road Ground	Peterboro	10	44	4.40
Fraser Eagle Stadium	Accrington S	11	39	3.55
Underhill Stadium	Barnet	10	35	3.50
Sincil Bank	Lincoln City	10	35	3.50
The Moss Rose Ground	Macclesfield	10	34	3.40
Field Mill Ground	Mansfield	11	34	3.09
Edgeley Park	Stockport	11	32	2.91
Blundell Park	Grimsby	11	32	2.91
National Hockey Stad	MK Dons	10	28	2.80
Gigg Lane	Bury	10	28	2.80
Gay Meadow	Shrewsbury	9	25	2.78
York Street	Boston Utd	11	29	2.64
96.6 Darlington Arena	Darlington	10	25	2.50
The Deva Stadium	Chester	11	25	2.27
County Ground	Swindon	10	22	2.20
Bescot Stadium	Walsall	11	24	2.18
Racecourse Ground	Wrexham	10	20	2.00
Adams Park	Wycombe	11	22	2.00
Meadow Lane	Notts County	11	22	2.00
Victoria Park	Hartlepool	10	19	1.90
Spotland Stadium	Rochdale	11	20	1.82
Edgar Street	Hereford	11	20	1.82
The Memorial Stadium	Bristol Rvs	11	17	1.55
Plainmoor Ground	Torquay	10	15	1.50

## TEAM LEADERS

Team with the most..

**shots on target** 139 Hartlepool. **shots off target** 144 Wycombe. **corners** 149 Wycombe. **hit woodwork** 8 Darlington. **offsides** 96 Boston Utd. **fouls** 344 Boston Utd. **yellow cards** 44 Accrington Stanley. **red cards** 5 Accrington Stanley.

## PLAYER POWER

Player with the most..

**Shots** 65 Tommy Mooney (Wycombe). **Shots on target** 26 Tommy Mooney (Wycombe). **Shots off target** 39 Tommy Mooney (Wycombe). **Assists** 9 Jamie Forrester (Lincoln City). **Crosses** 93 Matthew Hamshaw (Mansfield). **Offsides** 45 Gregg Blundell (Chester). **Fouls** 74 Jason Lee (Notts County). **Free-kicks won** 51 Dean Lewington (Milton Keynes Dons).



2006/07 SEASON



## GOAL COUNTER 646

**RIGHT FOOT** 368 goals



**LEFT FOOT** 164 goals



**HEADERS** 102 goals



Own goals 10 (1.5%), Other body part 2 (0.2%)

## QUICK-FIRE GOALS

From the start of a match

Ben Herd (Shrewsbury vs Macclesfield) 0:19

By a substitute after coming on

Izale McLeod (MK Dons vs Wrexham) 0:38

## DISCIPLINARY



2.8 cards per match



0.2 cards per match

## QUICK-FIRE BOOKINGS

From the start of a match

Kevin Hill (Stockport vs Torquay) 0:24

By a substitute after coming on

Michael Welch (Accrington S vs Bury) 2:40

## SUB TOTALS

Subs used .....1180

Offsides .....1553

Corners .....2841

Shots Off Target .....2587

## BEAT THE TRAFFIC

Total number of goals you would have missed by leaving every match ten minutes early

1 0 0

In the Coca Cola Football League Two this season there have been **2586** shots on target, goals constitute **25.0%** of all shots (doesn't include own goals). The woodwork has come to the rescue of the defending side on **106** occasions (the biggest beneficiaries being Peterborough **10**). There have been **87** penalties awarded this season and of those **66** have been scored (a success rate of **75.9%**).

Shrewsbury have been awarded most penalties - **9**. Rochdale have given most penalties away **8**. The team to score the most penalties is Shrewsbury **6**. Hartlepool missed **4** penalties in the Coca Cola Football League Two this season.

## RESULTS

How many times each result has occurred this season - home sides score shown first

0-0	16
1-0	29
2-0	24
3-0	7
4-0	3
5-0	3
0-1	22
0-2	15
0-3	3
0-4	-
0-5	2
1-1	32
2-1	25
3-1	4
4-1	4
5-1	-
6-1	-
1-2	19
1-3	8
1-4	1
1-5	-
2-2	10
3-2	5
4-2	1
5-2	3
2-3	6
2-4	1
2-5	-
3-3	5
4-3	-
5-3	-
3-4	1
3-5	1
4-4	-
5-4	-
4-5	-
5-5	-

\*up to and including 14/12/2006



## CHESHIRE DEMOLITION LTD

72 MOSS LANE, MACCLESFIELD, CHESHIRE, SK11 7TT

TEL: 01625 424433 FAX: 01625 611094

WWW.CHESHIREDEMOLITION.CO.UK

SUPPLIERS OF QUALITY RECLAIMED BUILDING, ROOFING AND LANDSCAPING MATERIALS INCLUDING ARCHITECTURAL FEATURES. WESTIRLANDE FEATURE STONE FROM IRELAND, YORK FLAG STONE, GRANITE SETTS, COPING STONES, TROUGHS, PAVIOURS, RAILWAY SLEEPERS AND LAMP POSTS.

ROOFING SLATES AND TILES AND A SELECTION OF CHIMNEY POTS, BRICKS, BOTH HAND MADE AND WIRE-CUTS. DOORS, OAK FLOORING, STONE WINDOW SURROUNDS, STAINED GLASS, CAST IRON RADIATORS, BATHS, A VARIETY OF SINKS AND FIREPLACES. WE ALSO SUPPLY INDIAN STONE PAVING AND TRAVATINE FLOORING.

PLEASE RING OR VISIT BETWEEN 8.00AM AND 5.00PM WEEKDAYS OR 8.00AM AND 1.00PM SATURDAYS.

## MACC BENEFACTORS

A Benefactor Bond costs £1,000. There are 100 bonds available for issue.. The Bond lasts for 12 months from the date of purchase at which point the following options are available:-

- 1 The Bond can be re-paid in full.
- 2 It can be renewed for a further 12 months.
- 3 £200 of the Bond can be converted into shares on each 12 month anniversary, with full Bond benefits remaining. A Bondholder taking this option could at the end of five years own 1,000 shares in the club and enjoy the benefits of being a Bond holder for that five year period.
- 4 A Benefactor who converts his entire Bond to shares over five years will be offered a Golden Benefactor Bond for £1.00. This will entitle the holder to Bondholder benefits for life.

### BENEFITS:

- 1 To have helped the Club in its hour of need.
- 2 Benefactors' Roll of Honour in the Programme and Macclesfield Express.
- 3 One free booking of the Mclroy Suite

- for a function per year.
- 4 Discounted lounge bookings.
- 5 Discounted club merchandise.
- 6 Guaranteed Cup tickets.
- 7 Annual benefactors' complimentary social event with Club officials and players.
- 8 Two free tickets for a free pre-match meal in the Mclroy Suite for one game per season.

### Benefactor Bond 'Roll of Honour'

GEOFF FINDLOW  
STEPHANIE KLEYNHANS  
& MICHAELA KLEYNHANS  
PAT & ANDY SPARKES  
MR J. SAXON  
FRANCIS KIRK  
IAN CARROLL & LISA KIRKUP  
STEPHEN WHITEHURST  
PETER MORGAN  
GRAHAM & ANDREW BRINKHURST

For more details or to get an application form, please ring (01625) 264686.



# SWINDON TOWN



## ROBINS FLY IN TO THE MOSS

Thirteen years ago Swindon Town finally sat amongst the top flight of English game.



● Christian Roberts - leading goalscorer

It capped a remarkable few years for the club, who having thought they had secured Premiership football at Wembley in the 1989/90 play-off final, were eventually to be demoted back to Division Two as a result of financial irregularities. Using that as the motivation Glenn Hoddle, ably assisted by John Gorman, assembled a team that, at times played some delightful football.

However their time with the Big Boys lasted just one season, not helped by the failure to record a league win until November. Sound familiar! The club has never really recovered and despite the odd blip, has had a pretty tough time ever since. Relegation at the end of last season typified events at the County Ground. Two managers came and went, both unable to prevent the drop in the league's basement once again.

But there are smiles on the faces of the loyal fans once again, as the team got off to a great start this season winning their first six games. Even the departure of Dennis Wise to Leeds, after less than six months in the job failed to dampen spirits. His replacement, Paul Sturrock, is the man charged with steadying the ship, and early signs suggest Swindon remain as one the favourites for promotion this season.

### LEADING SCORERS 2006/07

- 9 - Christian Roberts
- 5 - Lee Peacock

### LEAGUE GOAL CHART

Conceded	Minutes	Scored
2	0 - 15	4
3	16 - 30	5
5	31 - 45	7
1	46 - 60	5
5	61 - 75	5
3	76 - 90	4

### SWINDON TOWN TEN YEAR RECORD

Played 468 ● Won 142 (31%) ● Drawn 121 (26%) ● Lost 197 (43%)

## FANS EYE VIEW

**Interview:**  
After such a great start it was a bit of a shock to the system when we lost our manager to the lure of Leeds. However Paul Sturrock has a proven record at this level and has restored a lot of the confidence in the side. We'll be disappointed if we don't finish back at the first attempt.

**What have you enjoyed so far?**  
No one has really stood out for me. But Peterborough were very professional when they came to the County Ground. Not pretty, by any imagination but their football seems well suited to what is needed to get out of this league.

**What do you think of the club?**  
Apart from the blip against Mansfield we have been fairly solid on the road conceding only nine goals in 11 games. So despite our unbeaten run I think it is for a 1-0 win to set us up nicely for the crucial Christmas period.

### LEAGUE FORM CHECK

04.11.06	Hereford (H)	L1-2
18.11.06	Torquay (A)	W1-0
25.11.06	Bury (H)	W2-1
02.12.06	Mansfield (A)	L0-2
09.12.06	Walsall (A)	W2-0
16.12.06	Bristol R (H)	W3-1

### SWINDON BY NUMBERS

- 14,255 Ground capacity at the County Ground
- 770 Number of league games played by John Troilope for the club
- 294 Miles for the trip to and from Swindon to the Moss Rose
- 9 The number of managers since 1999
- 5,950 Average home crowd last season



# to the moss rose

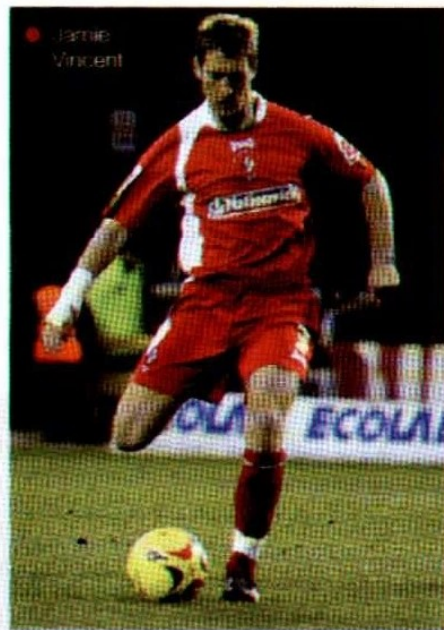
## MEET THE PLAYERS

### PETER BREZOVAN - GOALKEEPER

A giant in goal at 6'7, Brezovan signed on a year's loan from Czech club FC Brno in the summer of 2006. Brezovan became a fans favourite after performing heroics on his competitive debut against Hartlepool United on the opening debut, saving two penalties from Porter and Humphreys to earn Town all three points. However he sustained a serious injury in October and is unlikely to feature much before the end of the season.

### PHIL SMITH - GOALKEEPER

Smith joined Swindon in late July from Crawley Town where he had made 74 starts during a two-year stay. This followed a year's spell at Margate. A dependable performer, Smith is now the Town number one following Brezovan's injury and has put in a number of solid displays in recent weeks.



### JAMIE VINCENT - DEFENDER

Jamie is an experienced left back who has played at the very top level during his spell with Portsmouth. London born, Jamie was a began his career at Crystal Palace before making the switch to AFC Bournemouth, where he made over 100 appearances between 1996 and 1999. A big money transfer to Huddersfield Town was followed by a move to Portsmouth in 2001. The 31 year old then had spells at Derby County and Millwall before signing a one-year deal with Town in July 2006, and will be hoping to impress over the coming months in order to extend his stay in Wiltshire.

## PAUL STURROCK - MANAGER

*Sturrock arrived at Swindon Town FC last month after the surprise departure of former management team Dennis Wise and Gus Poyet.*

Perhaps equally surprising had been Paul's dismissal at Hibernian in October, the Sheffield Wednesday board dispensing of Sturrock's services less than two seasons after he had guided them back to the Championship.

A manager with so much experience was sure to be in great demand, and so it proved when he was announced as the new manager of Swindon. Paul had been out of work for less than three weeks.

Before starting out in management Paul had been an integral member of the successful Dundee United team of the early 80's.

During this time he picked up a League winners medal in 1983 and two league cups in 1979 and 1980. "Lugg," as he was affectionately known, also appeared in the UEFA Cup final against Barcelona in 1987. He went on to score 117 goals in 576 appearances for United and also appeared for Scotland at international level. Only the presence of Kenny Dalglish, Frank McAvennie, and Charlie Nicholas prevented him from winning more caps.

After twenty years of dedicated service at Tannadice he hung up his boots. After four years coaching, and a spell as St Johnstone's manager, he returned to United.

But his spell in charge at Tannadice lasted just two games before he resigned and left Scotland to begin life as a manager in the Football League, with Plymouth Argyle.

### JACK SMITH - DEFENDER

Can perform in a variety of positions but prefers to operate at left back. A former Watford trainee Smith joined the club the summer of 2005 and was immediately given an opportunity in the first team after the departure of Paul Robinson to West Bromwich Albion. Jack was a regular performer in the side last season making 38 appearances and has featured in all but one league game so far this campaign, chipping in with one goal.

### JEREL IFIL - DEFENDER

Powerful centre back who is in his forth spell with the club, having previously enjoyed three loan spells for Town. Then boss, Andy King eventually splashed out £70,000 in July 2004 to make the move permanent and Jerel has



since he led the Pkippers to the League Two title.

Sturrock was to then move to Southampton in March 2004. However, his time at St Mary's turned sour and after just 13 games in the Premier League he left the Saints.

He headed north to Sheffield Wednesday. The Owls made it into the play-offs in his first season in charge, defeating Hartlepool United in the Championship final at the Millennium Stadium and adding over 40,000 into wild celebrations.

### QUOTE AFTER LAST SATURDAY'S GAME

*"We responded to losing a hard goal and rolled our sleeves up. The lads showed tremendous character. We had been done by a goal just through the middle, and that's how strong we will look but happy that the lads were fantastic, and it was magnificent to have over 10,000 in the ground. I can't wait to continue."*

since gone on to become a fan's favourite. He has amassed over 100 appearances for the Wiltshire team and forged a strong partnership alongside the experienced Ady Williams. However in that time he has failed to score, something he will no doubt be looking to address today.

### ADY WILLIAMS - DEFENDER

Club Captain Williams brings was signed from Coventry City in pre-season and brings him a wealth of experience in a career that includes successful spells with Wolves and Reading. A tough and commanding figure at the heart of the defence, the former Welsh International was asked to take temporary charge of the team after Dennis Wise's departure. Only picked up just the one booking so far this season.

## ANDY NICHOLAS - DEFENDER

'Nicho' joined Town in the close season of 2003 following his decision to leave Liverpool. A regular in the Under 19's side at Anfield Andy won many plaudits with his performances at left back. With first team opportunities limited Andy decided to move on, a decision that prompted Andy King to snap up the youngster. Despite making such a positive impression in his first season, Andy struggled with injuries the following campaign. However no fully fit, he been a regular in the side this season and needs just two starts to rack up 100 appearances.

## GARETH WHALLEY - MIDFIELDER

Gareth is an experienced performer who was part of Wigan's promotion to the Premiership two seasons ago prior to joining Swindon in July 2005. Originally a trainee at Crewe, he made over 200 first-team appearances for the Railwaymen before signing for Bradford City in July 1998 for £600,000. A regular during their two-season spell in the top flight Gareth was to then move onto Cardiff where he was to play a significant role in the club's promotion through the Play-Offs. A key signing for Swindon, Gareth has yet to appear this season as a result of an ankle injury that required surgery in the summer.

## MICHAEL TIMLIM - MIDFIELDER

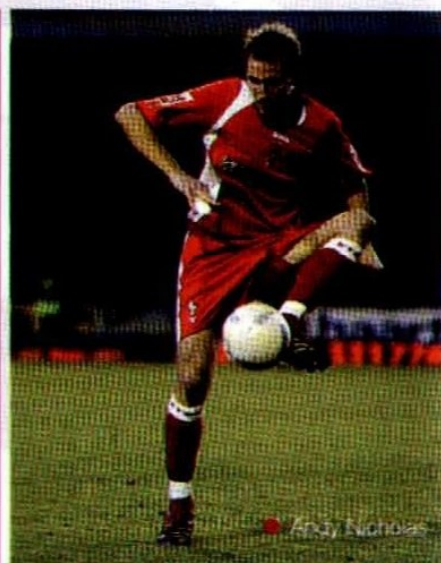
Timlin signed on loan for the club from Fulham before the transfer window deadline at the end of November. The combative midfielder slotted straight into the first team and helped to the team to three wins in the last four league outings. However he has picked up three bookings in the process and will need to avoid further cards if he is to avoid suspension.

## SOFIENE ZAABOUB - DEFENDER/MIDFIELDER

Sofiene was new manager Paul Sturrock's first signing, joining the club on an initial short term deal until the New Year. The versatile left-sided player is equally at home in defence or midfield and has featured in every game since his arrival in October. He made his debut as a substitute against Carlisle United in the FA Cup and was a trialist at Sturrock's former club Sheffield Wednesday. Previous clubs include FC Brussels, Modena and St. Etienne.

## RICKY SHAKES - MIDFIELDER

A tricky winger with plenty of pace, Shakes signed from Bolton Wanderers in a deal which also saw Charlie Comyn-Platt join the club. Shakes spent time on loan with Bristol Rovers and Bury during the 2004-5 season



and impressed Manager Andy King during a reserve game for STFC towards the end of the 2004-5 campaign. A Trinidad & Tobago player, Shakes signed on for STFC in July 2005 and went on to establish himself on the right of the Town midfield, narrowly missing out on a place in the 'Soca Warriors' World Cup squad along the way.

## MICHAEL POOK - MIDFIELDER

'Pooky' signed his first professional contract ahead of the 2005/06 season after putting in consistent performances for the both the youth team and reserves. The energetic 'box-to-box' midfielder will be looking to secure a regular first team shirt in the coming months. And with a keen eye for goal, Pook will be looking to add to his tally, his one and only strike coming in the 3-0 home victory against Grimsby back in October.

## BEN WELLS - MIDFIELDER

One of three Centre of Excellence players who signed on as first year scholars in June 2004, Wells has featured mainly as a substitute this season. Now signed on as a professional with a year's contract, the energetic Wells will look to make the most of every opportunity that comes his way.

## AARON BROWN - MIDFIELDER

The left sided midfielder's expected transfer away from the County Ground never materialised in the summer. Has forced his way back into the side with a string of solid performances and also weighed in with some useful goals, including the winner against Bristol Rovers. No doubt that goal will have been doubly sweet for Brown, who spent six years on the books at Ashton Gate,



# the robins

before spells with QPR, Torquay, Exeter and Cheltenham. Clearly a west-county lad at heart!

## **CURTIS WESTON - MIDFIELDER**

Another summer signing, Weston joined from Millwall where he became the youngest ever FA Cup finalist ever at 17 years and 119 days, coming on to replace Dennis Wise in the 2004 final against Manchester United. A busy midfielder who likes to get amongst the goals, Weston has impressed with combative central displays, showing pace, aggression in the tackle and awareness. The 19-year old has been in outstanding form so far this term.

## **PAUL EVANS - MIDFIELDER**

A Welsh international with over 400 league starts to his name Paul joined the club during the close season after being released by Nottingham Forest. His previous clubs also include Shrewsbury, Brentford, Bradford, Rotherham and Blackpool. Started this season off in fine style with four goals in the first nine games but has failed to find the net since. His last game came back in November.

## **ASHAN HOLGATE - MIDFIELDER/FORWARD**

Tall, gangly figure who can operate as a striker or in midfield. Scored on his senior debut against Millwall in pre-season 2004, after coming on as a substitute but with fierce competition up front for places Holgate has only featured twice this season in the cup competitions.

## **CHRISTIAN ROBERTS - FORWARD**

Cardiff-born striker who joined Town in October 2004 in a £50,000 switch from local rivals Bristol City. Roberts is currently in a rich vein of form, with seven goals in the last nine games, helping no doubt to put behind him a period in his life when alcohol had looked set to end his career. His time at the Sporting Chance Clinic was instrumental in the recovery process, one that has rekindled

his desire for the game. Roberts made his name with Exeter City where he scored 18 goals in 67 league starts for the Grecians from 2000 until 2002.

## **LEE PEACOCK - FORWARD**

Striker Lee Peacock joined Swindon Town on 20th January 2006 on a free transfer from Sheffield Wednesday. A proven goal scorer in a career that started out at Carlisle before a productive spell with Mansfield Town and then a big money move to Manchester City. Injury struck during his time at Maine Road and Peacock found himself at Ashton Gate. His time for Bristol City was his most productive, bagging 54 goals in just 131 appearances. Then it was off to Sheffield Wednesday before returning to the West

Country. A knee injury restricted his first team appearances last season, but has featured regularly this campaign with five goals to his name.

## **BLAIR STURROCK - FORWARD**

Blair Sturrock, son of manager Paul, has made over 150 appearances in a career that includes spells with Dundee United, Brechin City, Plymouth - where he played also under his father, Kidderminster and Rochdale. The 25 year old free agent joined the club earlier this month after training with Town and playing in two reserve games. Without a club since leaving Rochdale this summer, Blair has been signed to bolster the club's striker resources, which have been hit with a series of injuries.



## **one to watch...**

### **LUCAS JUTKIEWICZ - FORWARD**

Southampton born Lucas was described by Ex-Swindon manager Dennis Wise as a boy in a man's frame. At 17, he would argue with those sentiments. After impressing in pre-season Lucas was forced to bid his time. However two goals in the last two league games suggest the end of the wait to spot use, and is highly regarded by the Swindon faithful.

# picture of the past



# ...a silkmen history



## THAT WAS THE YEAR THAT WAS 1949

Manchester City were Queen's Rovers' Cup finalists for the first time since the year 1944 and it was Bert Swindells' first season as manager. The Silkmen defeated Blackburn 2-1, George Alexander's goal at Wembley lifted City to the final of the FA Cup. Northampton were the first to be defeated by the City of Manchester.

The two teams met in the final again the following year when Manchester triumphed 2-0.

The players were Jackie Prescott, Alan Jones, Frank Marshall, Jimmy Cairns, Nat McKelvey, Bill Duffley, Jim Dwyer, Alf Turner, Joe Smith, Eric Barber, Ken Pittford, Ken Spink, Cliff Jones.

## SILKMEN STAR MAN

**ERIC BARBER:** Centre forward who had goalscoring ability in the League and the great forward play he put on Manchester in August 1949. He joined the club after leaving the ranks of Arsenal in 1947. He was a member of the British Water Polo team and played for the club in March 1949. He represented his country in April 1949.

Following Manchester's August 1949 triumph over the Queen's Rovers, the year 1949 was

caught

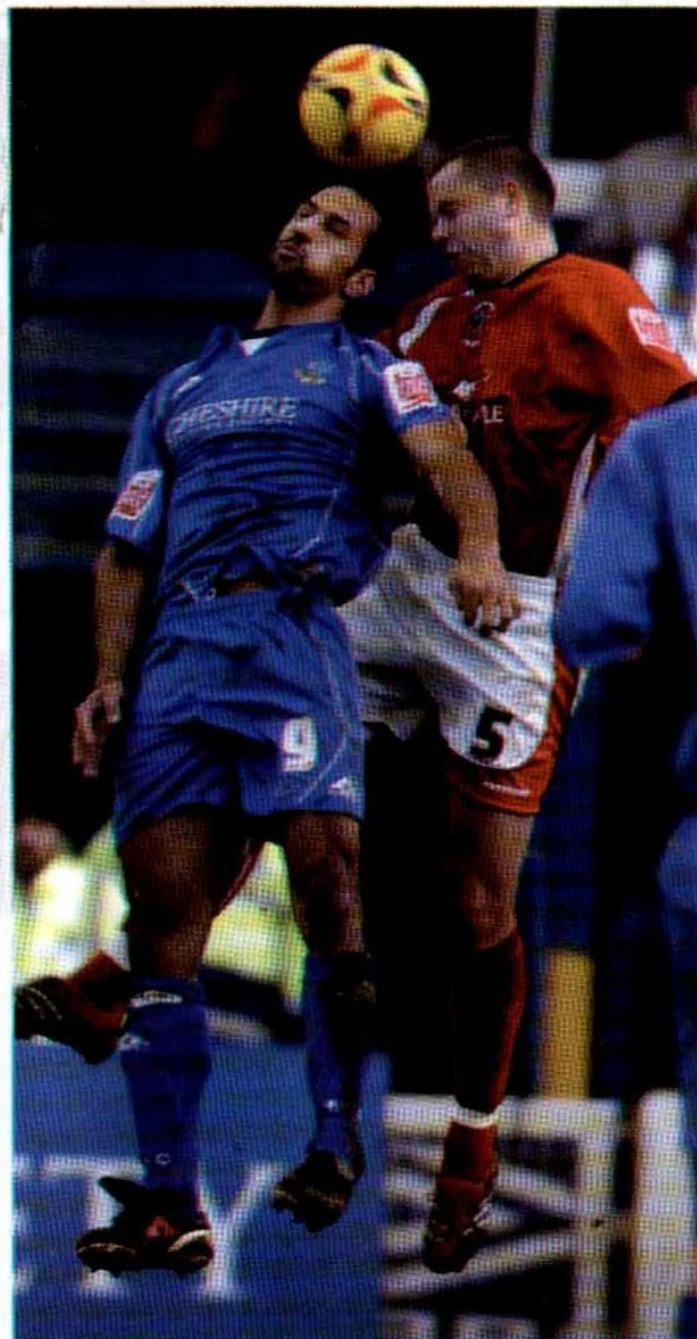
# ACTION REPLAY



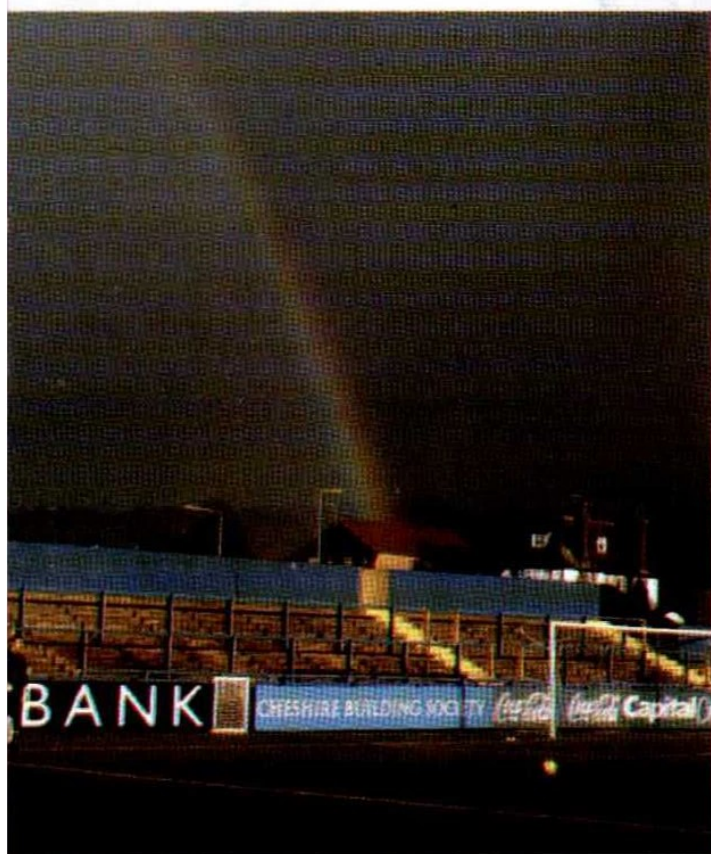
macclesfield town 3 accrington stanley 3 16/12/06



● Paul Ince points the way



● Matt McNeil battles it out in the air



● Things are looking brighter at the Moss Rose!

# in the act!



● The Silkmen can't convert this chance



● Disappointment as Accrington notch the opener

## managers' views

"There were a lot of words said at half-time because the performance was totally out of character. The second half was a lot better as we started to pass the ball and caused them lots of problems. But having got the lead we should really have shut up shop."

*Ray Mathias,  
Macclesfield Assistant Manager*

"That was a relief. There is no hiding it, we are in a relegation battle, and every point is now important. You can't fault our lads for effort and I am proud of their fighting spirit."

*John Coleman  
Stanley Manager*

up close



# TRAVELLING IN STYLE!





# ...and personal

## **Here's a question to get you thinking. What have Justin Timberlake and Macclesfield Town Football Club got in common?**

Is one of the lads secretly seeing Cameron Diaz behind the singer's back? Or perhaps the gaffer is helping out the ex lead singer of N-Sync with some new dance moves?

Well as much as we would like one of those to be true the answer lies closer to home. If we add the England Cricket team to the list does that help? Give in? Well the answer is that at some stage in the last few years they have all shared the same coach, to get them around the country.

That coach is now the proud possession of Anthony's Travel. The Cheshire based travel firm acquired the coach a few years ago and it has seen regular use on our away trips ever since. And given the illustrious list of past clients, you will not be surprised to hear that it is a veritable palace on wheels.

We followed the coach on the recent trip to Nottingham. And who better to act as our tour guide than Dave the coach driver, otherwise known as Big Dave! But before getting his thoughts we spoke to assistant manager Ray Mathias.

● Ray Mathias leans the wheel at Meadow Lane



### **So when did you set off for Nottingham?**

It may surprise many to learn that we actually set off on afternoon before the game. Clearly it is a fine balance between the costs to do so and the benefits of which there are many. The key thing for any game, especially away games, is preparation. In travelling down the night before we have longer with the lads and can get them focused on the job in hand.

We can also ensure that they are eating the right kind of food at the right time, and that they are suitably hydrated.

### **And good for team spirit no doubt?**

For sure but people would be mistaken if you thought we were all sitting in the bar late into the evening. It was early to bed for all of them and then a leisurely breakfast and a quick walk to stretch the legs before we head off for our pre-match meal and then onto Meadow Lane.

We like to arrive at the ground no later than 90 minutes before kick-off. In that way it gives us ample time to warm up and ensure we start the game with the right tempo.

Clearly it worked as the team put in a great display at one of the league's top teams to secure their first away victory of the season. Waiting for them after the game was Big Dave...

### **So what time do you tend to get away from the games?**

Typically we look to be on the road no later than 5.30pm on a Saturday. Nottingham to Macclesfield is a fairly easy journey so we were back at base well before 8pm. And its amazing how much quicker the trip is when the team has won!

### **Do you stop for food on the way?**

We are far more sophisticated than that. The coach has its own in built oven. Typically we pick up the meals before setting off on our travels. They have been prepared by club chef Richard Astbury and tend to be pasta based food.

I understand that is great for the players after a tough game as they look to replenish their energy levels. I will tend to start the ovens during the game and if all goes to plan they are ready to be served in time for the journey home.

### **So what do the lads get up to on the journey?**

The coach has its own satellite dish so most of them tend to watch Sky Sports. Very

rarely do we have music playing, most choosing to listen to their own or play computer games.

### **So anything else we need to know about the coach?**

Well its got 32 seats, all of them leather and at the back there is a communal area for the lads to sit around. That's where most tend to head, especially if they fancy a game of cards. We also have our own toilet on board. So all in all we really are self-contained and can look after most things on a typical journey.

### **So you must feel very much part of the team?**

Without doubt! The lads have always made me feel very welcome and gone out of their way to make me feel part of the set-up. In fact some of them complained the other week when I told them I would be missing a game. Unfortunately I don't get a chance to watch any of the games but to be honest I am a rugby league man myself. Plus the lads aren't shy in telling me how well they played when they get back on the coach!

### **So any tales of late nights and wild women?**

What for me or the players? No not at all. I think Macc fans would be pleasantly surprised at just how professional the preparation is, even more so since the arrival of Incey. The only dirt I can dish from the trip to Nottingham was the fact that Paul was less than pleased to be woken up at 7.30am by an eager Duncan Russell to see if he fancied joining him for a swim!

I believe he politely declined the offer and left Russ to his 50 lengths before breakfast!

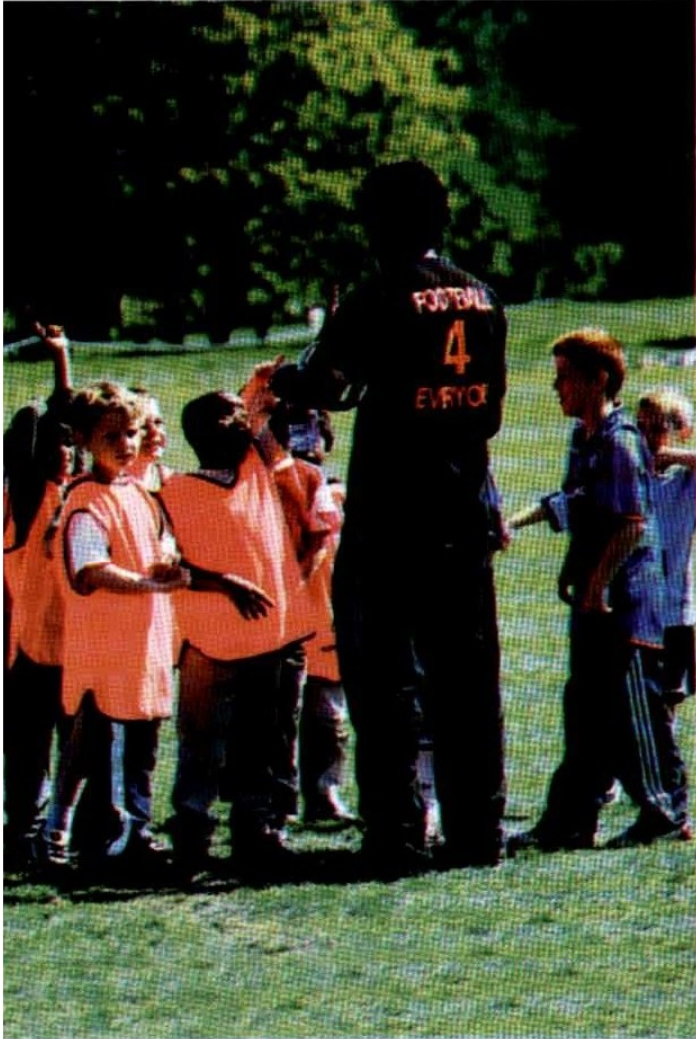
Some of the lads are starting to get very worried about what next year's pre-season training is going to be like!

### **And we understand you had a little prang at Walsall?**

Who told you that? I think the best answer is to say, no comment!

The interior of the coach really has to be seen to be believed. No surprise to hear that it is much sought after by other professional sporting clubs (e.g. Chester City, Warrington Wolves, Widnes Vikings) and a whole host of other corporate clients. It must have so many stories to tell, but unfortunately despite the offer of a crisp twenty pound note Big Dave was unwilling to impart any!

But if it is good enough for Justin then it is good enough for the Silkmen.



**FootballFoundation**  
*football's biggest supporter*

We provide grants for pitches, changing rooms, community schemes, kit and much more.  
**Are you getting your share?**

With over £290m already invested into projects since 2000 and another £45m worth of grants available this year alone, Grass Roots football is undergoing its biggest ever transformation.



**For further information visit [www.footballfoundation.org.uk](http://www.footballfoundation.org.uk)**

The Football Foundation 30 Gloucester Place London W1U 8FF  
T 0845 345 4555 F 0845 345 7057 E [enquiries@footballfoundation.org.uk](mailto:enquiries@footballfoundation.org.uk) W [www.footballfoundation.org.uk](http://www.footballfoundation.org.uk)  
Registered Charity Number 1079309 Registered in England and Wales Company limited by guarantee Company Number 3674305

**improving facilities • creating opportunities • building communities**



— FUNDING PARTNERS —

# SUPPORTERS' TRUST

## WELCOME

The Silkmen Supporters Trust would like to welcome all supporters of Swindon Town to the Moss Rose. We hope you have a good day out and a safe trip home.

As the end of the year approaches, it's amazing to think that the club's troubles that saw the birth of the Silkmen Supporters Trust were now 12 months ago.

To recognise our first year in existence we are going to bring you some history of the key moments.

This week we are looking back at the Pixsale, which was initiated by Gary Jackson via 'The Silkweb', and which raised over £8,000. Gary sprang into action on the day the fine was announced and later, donated all proceedings to the Trust. This donation remains our single biggest donation and everyone is very appreciative of Gary's hard work during that time.

As well as the money, the Pixsale offered the chance to leave comments, turning a great fundraising idea into a petition. These messages of support were as welcomed as the money they brought with them.

Gary has written his version of events for us...

## The S.O.S. Pixale

It was just after 5.15pm on Monday 19th December 2005 and I was just driving home past Zeneca in Alderley Edge when my phone vibrated in my pocket.

The traffic lights had just turned to red so I decided to take a look... "we have been fined £300,000 by the FA which has to be paid sharpish" it read.

My concentration had gone... a car beeped me from behind as the lights were on green.

The remaining 15 minutes to get home had me thinking of ways the club could raise the cash to pay this awful fine. I got straight onto TheSilkWeb.com message board and chatted with a few people. Then the idea hit me...

I had been looking at a site made by a young lad in York for the past three months where by a company would buy "pixels" to advertise on the said webpage and he was hoping to raise a million dollars from it - which he did!

Now if I could do something like that but to



raise money for the fine... by 9pm that night the Save Our Silkmen pixsale was born.

The website allowed football fans to buy a square on the webpage for £1.25 which would display the team they supported and a good luck message.

I had already collected over £100 from it before I went to bed.

The next morning I checked my emails and I had well over £300's worth of donations. It was going to be a busy few weeks for me.

The following week I was up until god knows what hour adding the donations and updating the sites.

It was hard work but very rewarding and by New Years Eve the total stood at just under £3,000.

Teams from far and wide donated to the cause. From Fortuna Dusseldorf to Harrogate Railway they all helped out.

A big Macc fan contacted me in January telling me that Liverpool striker Peter Crouch had donated a signed shirt to auction off for the SOS appeal.

We decided to put it on eBay and that the

total raised would be added onto the Pixsale. Within a day the shirt was on £1,000 - we couldn't believe it! But it was true and the Norwegian winner of the shirt promptly paid for it.

The Save Our Silkmen Pixsale came to close at the end of February with a staggering £8120.28 raised by football fans all over the world helping out Macclesfield Town.

You can still view the Pixsale by visiting [www.saveoursilkmen.co.uk](http://www.saveoursilkmen.co.uk)

## LEGENDS CALENDAR

At the time of writing, there are still a limited number of these calendars remaining. If there remains any in stock, they will be available in the Main Stand, by the stadium control room in the Star Lane End and in the McIlroy Suite after the game.

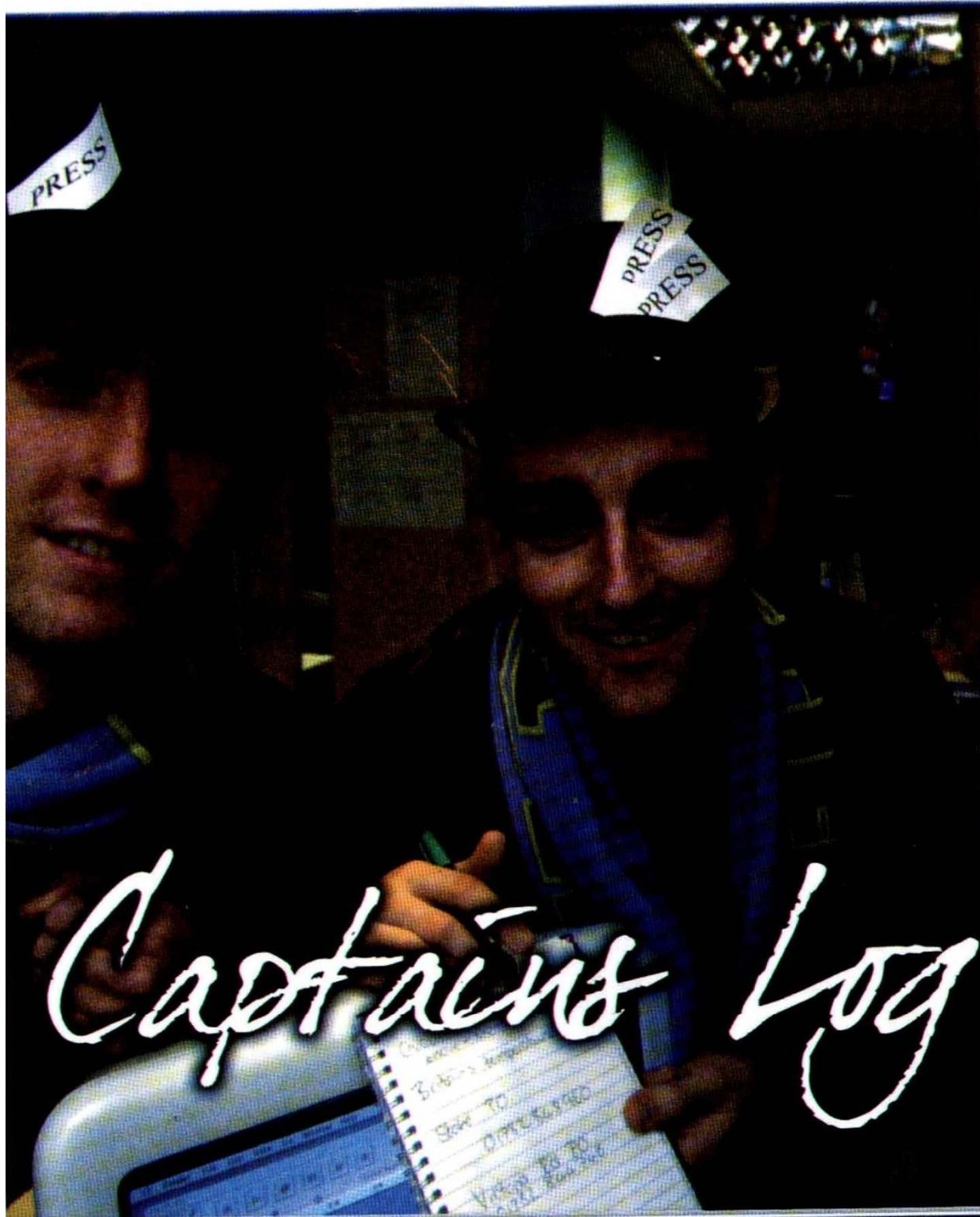
## NEXT MEETING

Saturday 20th January 2007 - 5.15pm

## FANS OPEN MEETING

McIlroy Suite - All Fans Welcome

dishing the



# dirt!

### ***There comes a time in every season when it is time to dish the dirt.***

And who better to turn to than Dave Morley. As club captain, and studying for a degree in sports journalism, he is ideally placed to stick the knife in. After all it is the season of goodwill to all men!

#### *So Dave who thinks they are the hardest ?*

It has got to be Jordan Hadfield! For such a young lad he walks around the place as if he owns the club!

#### *And the biggest creep?*

John Miles is always worming his way into the manager's good books by cheating in the skill games.

#### *And the worst trainer?*

After the last question some people might say I am the biggest creep but at the moment no one is the 'worst trainer' as the gaffer just would not let you get away with it. It used to be Bully but now I think he at least tries!

#### *Anyone with particularly bad dress sense?*

Matt McNeil gets the most stick but he just shrugs it off. Earlier this season he wore a dreadful pair of white trainers with half a tennis ball sticking out of the side. Clearly he must have seen something we didn't.

#### *Who has the worst taste in music?*

Sorry but it has to be Matt McNeil again. Not because he is an easy target but because he still thinks he's eighteen playing all that rave music with his windows down in the car. We wouldn't be surprised if he has asked for some furty dice for Christmas as well!

#### *Last person you would want to room with.*

That's an easy one. It's Kev McIntyre but not because he is a bad lad or anything. He just doesn't stop talking or horsing around. When you are trying to relax before a game that's the last thing you want.

#### *Biggest moaner?*

Another easy one! Step forward Colin Heath. He quite regularly throws his dummy out the pram when the gaffer gives a decision against him in training.

#### *Is the boss still hard?*

If his tackle on Danny Swales in the rugby the other day is anything to go by then the answer is YES. Of course I would still fancy my chances in a 50/50 with him though!

#### *Most under the thumb?*

The lads all say Kev McIntyre but you'll have to ask him. But give him some notice as he will need to check with his other half first!

#### *Slowest and quickest at the club?*

Depends what you mean by slowest. I can think of a few in that category. Izak Reid is probably the quickest but Bullys up there. But only when he's got a ball at his feet.

#### *Slowest to the bar?*

Martin Bullock! He has got to be the tightest man at the football club. He only came to the lads' Christmas party because the Gaffer kindly gave us a pretty large donation.

#### *Anyone particularly easy to wind up?*

It's Matt again I am afraid. He tends to bite at everything and is an easy target for the Scousers in the team.

#### *Any nicknames we can print?*

Bully gets called Golum after the character in Lord of the Rings. They tend to call me skip to my face but who knows what I get called behind my back. And after this article probably a lot worse!

#### *Who claims to be the Tiger Woods of Moss Rose?*

Colin Heath thinks he is a player and Bully is a bit of a bandit by playing off 18. But me and my partner Alan Navarro have managed to take a bit of money off them this season despite all their claims!

#### *And think carefully before you answer this one... Who is the longest in the shower?*

It certainly ain't me! It has to be Izak Reid. He takes ages to wash his hair!

● We would of course be delighted to hear from any of the lads implicated above and offer them the full right of reply!



Spot the difference...

# Olympus Trophies

**S. P. Baker**



40 Duke Street, Macclesfield,  
Cheshire, SK11 6UR

**Tel: 01625 614696**

[sales@olympustrophies.co.uk](mailto:sales@olympustrophies.co.uk)



**Trophies, Cups, Tankards, Glass & Silverware, Corporate Promotions  
& Engraveable Gifts.**



The Macclesfield Mortgage Company

w: [www.maccmortgage.com](http://www.maccmortgage.com)

t: 01625 422220

## Help yourself and help your club!

Whether you're buying a new place, or just wanting to save on an existing mortgage, we can help. We search over 90 lenders to find the right deal for you, and we don't charge a fee for standard mortgages or remortgages.

What's more, we'll donate £50 to Macclesfield Town Centre Of Excellence for every mortgage arranged when you mention the club.

Just text the words "Mortgage Advice" and your name to 07731 555 400, and we'll call you back, or you can visit our website at

[www.maccmortgage.com](http://www.maccmortgage.com)

**YOUR HOME MAY BE REPOSSESSED IF YOU DO NOT KEEP  
UP REPAYMENTS ON YOUR MORTGAGE.**

# SUPPORTERS' ALLIANCE

## MEMBERS' QUESTIONS POSTBAG

**Question:** My late granddad told me stories about Brian Fidler who was his all-time favourite player and played for the Silkmen in the glory years of the late 1960's and early 1970's.

I vaguely recall him telling me about an incident when the opposing manager through a bucket of water over Fidler during a match on the "Moss".

Can you provide more details about this incident and about Brian himself?

**Answer:** Brian Fidler earned himself a reputation during his time at Macclesfield for his antics after scoring a goal. He would race over to the stand blowing kisses, dancing up and down, sometimes doing a lap of honour. He was a real entertainer as well as being one of the finest strikers to ever play for Macclesfield Town. He became known to the fans as "Mr Showman".

The incident to which you refer happened on 27th December 1967 in a game against Altrincham which the Silkmen won 2-0. Brian scored a goal and ran over to the Altrincham bench and made a rude gesture with his fingers.

Freddie Pye, who was their manager at the time and later became a Director at Manchester City, picked up the trainers bucket of water and poured it all over Brian.

Their little get-together hit the headlines of course but what most people do not know is that the two became very close friends after that incident; a friendship that has continued to this very day.

It started a few days after that game when Freddie was guesting for a Macc snooker team and his partner was, of all people, - Brian. In fact they hit it off so well that they won their match and they have been friends ever since.

Brian finally got his own back on Freddie just over 30 years later on 8th July 1999. It was Freddie's wedding day and as he emerged from Manchester Registry Office with his new wife, Dawn, Brian ran at him with a bucket and covered him in a shower - of confetti. He did think about filling the bucket with water but decided that confetti was more appropriate.

Brian joined Macclesfield Town in



September 1966 from Heanor Town for whom he had scored 60 goals in the previous season.

He made 301 appearances and scored 173 goals during his six seasons with the Silkmen before joining Stafford Rangers in July 1972 for £1000 at the age of 29.

He later became a successful non-league manager and guided Burton Albion to the F.A. Trophy final at Wembley Stadium in 1987.

Without doubt, Brian became the all time favourite for many Silkmen supporters and his presence at three events in the McIlroy Suite over the past four years has guaranteed sell-out audiences within days of the tickets going on sale. It seems that even now, 35 years after he left the Silkmen, the people of Macclesfield just cannot see enough of "Mr Showman" himself - Brian Fidler.

His contribution to Macclesfield Town Football Club was immense and his popularity with the Silkmen fans is obviously as strong today as it was in his playing days. Brian Fidler, for sure, will go down in the history books as one of the Silkmen's all time greats.

Supporters with any questions regarding the Silkmen should put them in writing and send them to: - Members Questions Postbag, M.T.F.C. Supporters Alliance, Moss Rose Stadium, London Road, Macclesfield. SK11 7SP

## JUNIOR SILKMAN

Last week's mascots for the Accrington game were Alex and Michael. They are seen pictured here before kick-off with Roary the Lion. We hope you both had a fantastic day and were not too disappointed with the result.



# MACC LADIES

## A GREAT START TO THE SEASON!



With matches cancelled because of waterlogged pitches, Macclesfield Town Ladies teams have had to take an early Christmas break, but can look back on an excellent first half of the season.

Fixtures resume on 7th January when the Ladies are due to play Buxton at home, but is likely to be replaced by a three-times-postponed cup tie against Welsh side Airbus UK.

The Silks are also at home that day to local rivals Stockport County Blues. Either way, there should be a Macc Town Ladies side playing at The Mulberry's, Club AZ, Nether Alderley at 2.00, so come and support your local ladies team!

### FROM THE ARCHIVES

*This match was played in October 2003. The week before, the Silkgirls had put in a disappointing performance away to Southport losing 3-0, and needed a good win to restore their confidence.*

### Macclesfield Town Ladies 4 Wigan Ladies 2

After a disappointing result the previous week, Macclesfield came back with renewed determination to chalk up their third League win.

The matches between these sides, almost seem to run to a pattern; Macc threaten to run away with the game, Wigan force their way back in, and just as it seems that

Macclesfield contrive to lose the game they find a way of securing victory!

Wigan had the best chances early on but fortunately their shooting was well off target. Meanwhile Macc created their own opportunities at the other end, and it was the home side which took the lead when a great ball from stand-in captain Gill Gagie found Michelle Gee who coolly drove the ball past the Wigan 'keeper for her fourth goal of the season.

Macclesfield were having by far the better of the game and it was against the run of play that Wigan equalised after 25 minutes. Their lead was short lived however, as Becky Snelson outpaced the visitors defence and placed the ball wide of the 'keeper. Macc still had to work hard and Sue Lea kept the ball out of the goal with a brilliant header from under the bar.

Wigan came out strongly in the second half and quickly drew level when a through ball eluded the Macclesfield defence and 'keeper Lorraine Ingley had no chance against the advancing forward.

The Silkgirls, who had played so well up to now, seemed to switch off and for the next 15 minutes it was Wigan who looked as if they were going to take the lead, Ingley having to throw herself at the feet of Wigan players to stop a certain goal.

Macc drew on their battling qualities, weathered the storm and gradually got back into the match, and with 10 minutes to go

**THE PLAYERS, SUPPORTERS AND OFFICIALS OF MACCLESFIELD TOWN LADIES WOULD LIKE TO WISH ALL AT MACCLESFIELD TOWN AND TODAY'S VISITORS FROM SWINDON TOWN A VERY HAPPY FESTIVE SEASON AND A PEACEFUL 2007.**

took the lead again. Jade Treanor, who was proving a handful for the Wigan defence, put over a great cross which Jordana Buckley latched on to and drove a superb ball over the 'keepers head.

Macclesfield were now getting into their stride, and with the visitors looking a little down sealed the game with another smart goal; Helen Beach crossed from the left, the ball was touched on by Tanya Foster (playing her best game this season) and Becky Snelson ran on to it and unleashed a powerful drive which the goalkeeper half stopped but couldn't prevent it crossing the line.

A hard fought win for Macclesfield who showed their fighting spirit and particular mention must be made of Krista Oakes who gave a another strong performance in midfield.

Jo Webb, Katie Hogan, and later Claire Whittingham and Ellie Stanley, were sound in defence in dealing with a good, physical Wigan side.

**Goals:** Becky Snelson (2), Michelle Gee, Jordana Buckley

**Player of the Match:** Krista Oakes.

**Team:** Lorraine Ingley, Sue Lea, Jo Webb, Gill Gagie, Katie Hogan, Helen Beach, Jordana Buckley, Krista Oakes, Tanya Foster, Michelle Gee, Becky Snelson, Ellie Stanley, Jade Treanor, Claire Whittingham.

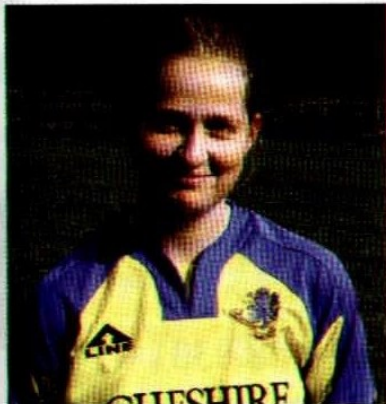
● You can follow the fortunes of our teams in the Congleton Chronicle and the Macclesfield Express, and also on the Macclesfield Town FC website by following the link to Macc Town Ladies. If you would like more information on the Club or are interested in playing, the webpage also gives a list of key contacts.

## LADIES TEAMS CURRENT STANDINGS

	P	W	D	L	League Position
Ladies (First team)	10	6	1	3	3rd
Silks (Second team)	5	3	1	1	4th
Under 16s*	10	2	2	6	5th
Under 14s*	8	4	1	3	4th
Under 12s Ladies*	8	7	1	0	1st
Under 12s Silks*	7	5	0	2	3rd
Under 10s*	8	6	1	1	2nd

\* These are final league tables for the girls teams who are now engaged in their Champions and European League matches.





## PLAYER PROFILE

Jenna Mape (pictured above and right) is a key striker for the Ladies first team and has netted seven times so far this season, and laid on a few more goals for others.

**Age:** 17

**Previous clubs:** I've only ever played for Macc Town Ladies

**Why do you like playing:** The squad is very friendly and there is a good team spirit; everyone gives 100% even if we aren't playing well at the time.

**Favourite clubs:** Macc Town and Manchester United!

**Favourite players:** Dave Morley and Gary Neville (NB: two defenders favoured by a striker!).

**Other sports:** I'm a cricket fan!

**Education:** Attends Macclesfield College studying Sports Development and Fitness; I'm hoping this will help me to get into a sports related career.

**Favourite food:** Sunday roast!

**A good night out:** Anywhere with my friends!

Jenna's "big sister", Jo, also used to play for Macc Town Ladies before starting work. Jo has signed up again and hopes to play when she can get time off from her job at Manchester Airport.

Best of luck Jenna for the second half of the season; another seven goals will come in very handy for the team in their bid to become league champions!



WWW.

# Football Emporium

.co.uk



**From Football Kit Gnomes to  
Crystal Glass Model Stadiums**



**H.N. NUTTALL LTD**  
*Foodservice*

*Suppliers of dry goods, chilled, frozen,  
disposables and cleaning materials.*

*The Nuttall's range is suitable for  
all types of caterer.*

Newton Moor Industrial Estate  
Hyde, Cheshire, SK14 4LF

**Tel: 0161 368 0331**

**Fax: 0161 367 8897**

**www.hnnuttall.co.uk**

**DAIRY FARMERS  
OF BRITAIN**



Suppliers of... *Definitely...*  
**Cheshire ...fresh milk!**

# MTFC ROLL CALL

PLAYER	2006/2007				MTFC LEAGUE		CAREER LEAGUE		CAREER ALL COMPS	
	Lge Apps	Lge Gls	Cup Apps	Cup Gls	Apps	Goals	Apps	Goals	Apps	Goals
Asmir <b>BEGOVIC</b>	2(1)	0	1	0	2(1)	0				
Jonathan <b>BRAIN</b>	9	0	4	0	9	0	66(1)	0	81(1)	0
Ian <b>BRIGHTWELL</b>	4	0	1	0	17(4)	0	418(46)	18	491(57)	19
Martin <b>BULLOCK</b>	17(3)	3	3	0	56(5)	11	297(107)	19	354(126)	26
Jordan <b>HADFIELD</b>	14(2)	0	4(1)	0	14(2)	0	15(2)	0	19(3)	0
Colin <b>HEATH</b>	8(8)	3	4(1)	0	8(8)	3	23(15)	4	29(16)	4
James <b>JENNINGS</b>	2(1)	0	0(1)	0	2(1)	0	3(1)	0	3(2)	0
Tommy <b>LEE</b>	12	0	0	0	22	0	22	0	23	0
Marvin <b>M'DONALD</b>	0	0	0(1)	0	0	0	0	0	0(1)	0
Kevin <b>M'INTYRE</b>	19(1)	3	4	1	84(3)	8	235(9)	16	269(9)	18
Matt <b>M'NEIL</b>	14(3)	2	2(2)	0	26(3)	3	26(3)	3	29(5)	4
Jimmy <b>M'NULTY</b>	13	0	3(1)	1	13	0	13	0	17(2)	1
John <b>MILES</b>	4(4)	0	1	0	56(43)	17	56(43)	18	69(57)	19
David <b>MORLEY</b>	13	2	2	0	77	5	246(31)	16	284(35)	17
John <b>MURPHY</b>	3(3)	1	2	1	3(3)	1				
Alan <b>NAVARRO</b>	13(2)	0	5	0	51(2)	1	101(18)	3	119(21)	4
Carl <b>REGAN</b>	14(2)	1	3(1)	0	14(2)	2	125(17)	1	141(18)	1
Izak <b>REID</b>	0	0	0	0	0	0	0	0	0	0
Rob <b>SCOTT</b>	14	2	3	0	14	2	275(40)	35	319(50)	37
Andy <b>SMART</b>	0	0	0	0	5(3)	0	6(3)	0	9(4)	1
Danny <b>SWAILES</b>	21	2	5	0	77	4	229(10)	17	268(18)	18
Andrew <b>TEAGUE</b>	10(3)	1	2(1)	0	38(5)	2	38(5)	2	44(6)	3
Matthew <b>TIPTON</b>	10(3)	1	0	0	124(20)	42	194(90)	60	222(108)	71
Jamie <b>TOLLEY</b>	15	1	4(1)	0	15	1	177(19)	18	202(26)	21
Spencer <b>WEIR-DALEY</b>	5(2)	2	1	0	5(2)	1	5(9)	2	9(10)	3
Simon <b>WILES</b>	2	0	2	0	2	0				

## SAFETY OF SPORTS GROUNDS ACT, 1975 AND 1987

IN the interest of Spectator Safety the following conditions apply at Moss Rose and must be observed at all times:

Glasses, bottles, drink cans, canisters, air horns, knives, darts, tools, fireworks, cameras, poles or any other article likely to cause injury or compromise public safety are not permitted to be brought into the ground.

The following are offences under the Football (Offences) Act 1991 and are strictly forbidden:-

- The throwing of any object within the ground;
- The use of foul and abusive language, obscene chanting or racial abuse towards any person;
- Unauthorised entry onto the Field of Play, except in an emergency.

The obstruction of gangways, access ways, exits and entrances, stairways and like places is strictly forbidden.

The consumption of intoxicating liquors is permitted only in the places authorised in accordance with the Sporting Events (Control of Alcohol etc.) Act 1985.

- Sitting on the perimeter wall is forbidden at all times.
- Any person acting in contradiction of these conditions is liable to arrest.
- Closed circuit television is in use and any spectator found to be acting in a disorderly manner is likely to be arrested or ejected from the ground.
- In the event of an emergency, instructions will be given via the public address system. Spectators must follow the instructions given.
- First Aid and Medical facilities are provided in the home section of the McAlpine Stand

Spectators are asked to comply with requests made by the stewards. Your co-operation in ensuring that these conditions are met would be appreciated.

To comply with the Safety Certificate, all doors and gates on Exit Routes will be opened before the end of the game, unless the Police or the Safety Officer directs otherwise.

# Relax...



## with The Silkmen Holiday Club

Book your holiday with The **Silkmen Holiday Club** and receive an exclusive discount simply for being a Macclesfield supporter!

To find out about our fantastic offers pop into your local **Thomas Cook** or call **0870 751 9954**



(Quote Ref: 552)



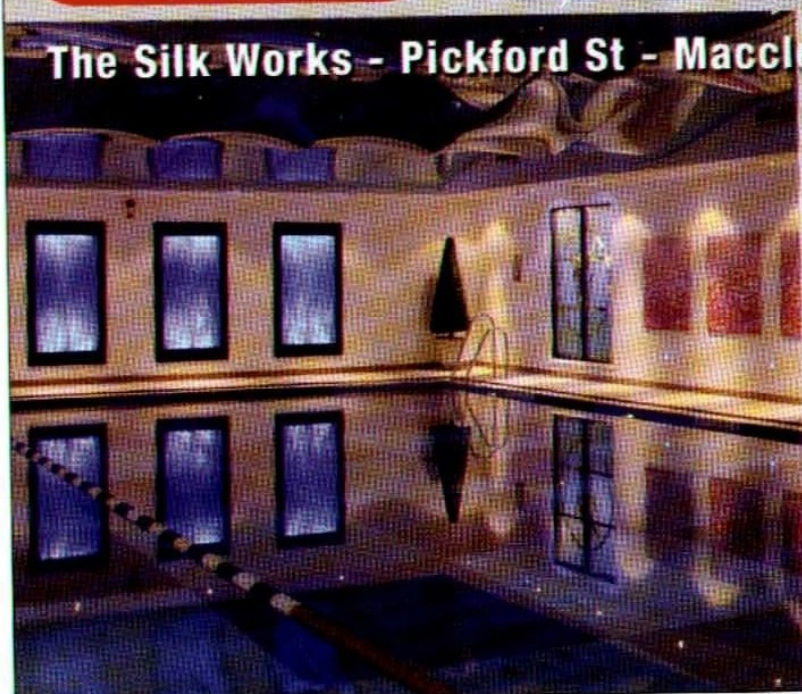
[www.thomascooksport.com](http://www.thomascooksport.com)

Terms & Conditions: The above offer is available to members of Thomas Cook Sport who are registered with the club. It is subject to availability. Thomas Cook Sport reserves the right to amend or withdraw this offer at any time without notice. The offer is subject to the availability of the club's facilities. Thomas Cook Sport is not responsible for any loss or damage to property or personal belongings. Thomas Cook Sport is not responsible for any loss or damage to property or personal belongings. Thomas Cook Sport is not responsible for any loss or damage to property or personal belongings.



## Fitness Club

**The Silk Works - Pickford St - Macclesfield Tel: 01625 410641**



Come and check out the best fitness club in the area!

**Fabulous Facilities Include...**

- Magnificent swimming pool
- Superb gym with 'free weights' area
- Two Aerobic studios with classes at no extra charge
- Spinning Classes
- Two Relaxing Hot Spas
- Aromatic Fibre Optic Lit Steam Room
- Members lounge
- Luxury changing rooms
- Free car parking
- JJB Superstore
- MUS Student Membership Available!

Open 6.30am-10pm weekdays 8am-8pm weekends  
(Off peak/student hours 8.30am-4.30pm weekdays & anytime weekends)

**MEMBERSHIP FROM LESS THAN £6 PER WEEK!**  
**CORPORATE MEMBERSHIPS NOW AVAILABLE!**

# COMMUNITY NEWS

Football in the Community would like to wish everyone a very Merry Christmas and a Happy New Year in this the last home game of the year!

## SCHOOLS COACHING

The outlook is very healthy at the moment with many new schools booked in for the New Year. So hopefully you will be seeing us in your school very school.

## SOCCER SPECIAL

This morning we held our Christmas Soccer Special at Macclesfield Leisure. The participants really enjoyed themselves. Their favourite part of the day though is coming to see the Silkmen game. Hopefully they will be a good luck charm for the boys today. Look out for future activities Football in the Community will be running during half term holidays.

## BIRTHDAY TREATS

Today we have a match day party for George Ventris who is seven. His favourite team is obviously Macclesfield Town FC. George will be meeting his favourite Silkmen player and Roary the Lion. At half time George and his friends will be having a little game on the pitch so please be sure to give him and his friends a cheer when they are on the pitch at half time and make his birthday even more special.

If you would like a football party with Football in the Community you can contact Chris Tomkinson on 01625-264-688 who can give you more information on the birthday treats.

## TECHNICAL DEVELOPMENT COURSE

The development centre has now closed for Christmas and all participants who attend the centre on a Monday and Wednesday have shown a fantastic attitude and a willingness to improve, learn and develop as players. Hopefully we will see one or two of the boys pulling on a Macc Town shirt in the future.

## AGE CONCERN

Starting on Tuesday 9th January 2007 Football in the Community is starting a brand new programme to improve general fitness for both males and females over the age of



50. The sessions are being held at Morton Hall, off Buxton Rd, Macclesfield from 11-12am. The cost for attending these sessions will be £2 per person with 50p going towards age concern. If you would like any more information you can contact Vicky Japson on 01625-264-688

## SPECIAL MATCHDAY VISIT

Football in the Community would like to thank the visitors from the Audiology department at Macclesfield Hospital. We hope you really enjoyed your day and we hope to see you at the Moss Rose in the future.

## PARTNERSHIP PROPOSAL

Macclesfield Town Football in the Community are still looking for local businesses, no matter how big or small, to begin a partnership with the Community Scheme.

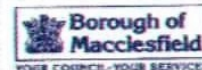
The partnership proposal is aimed at forging a relationship, which would benefit both our organisations. If your business or place of work would like to get involved then please call the Community team on 01625-264-688.

## EXERCISE FOR ALL

The Exercise for all classes have been growing over the last few weeks, there are still places available on both courses. The first course is Circuit training and runs from 6-6.50pm and the second course is Burns, Legs and Tums, running from 7-7.50pm. The course's run on a Wednesday evening for males and females at Black Road Community Centre, Off Buxton Road.

We would like to wish the manager and the players the best of luck in today's game and hopefully keep up our good run of form.

F.I.T.C.





Do something  
rewarding!

- ✓ Relax
- ✓ Help the world of medicine
- ✓ Get paid!
- ✓ Make friends

Helping AstraZeneca on a clinical study can be a very rewarding experience!

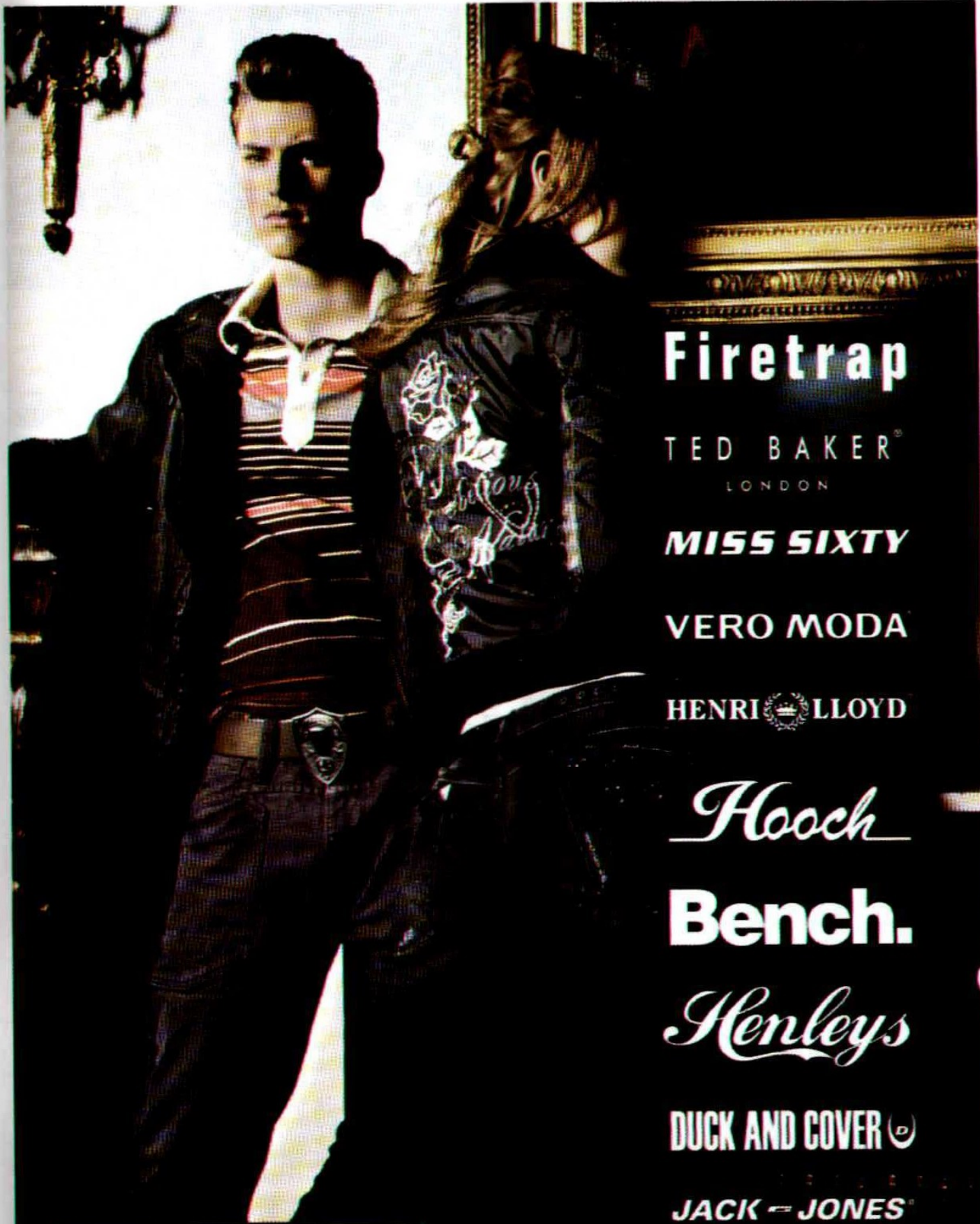
AstraZeneca, one of the world's largest pharmaceutical companies, is looking for people to help develop medicines by taking part in clinical studies at their Unit near Alderley Edge.

We need male non-smokers aged 18 - 50

You could receive between £100 - £150 per day for your time depending on the study.

AstraZeneca   
HEALTHY VOLUNTEER STUDIES

To find out more  
Call **0800 783 5979** or visit:  
**[www.healthyvolunteers.com](http://www.healthyvolunteers.com)**



**Firetrap**

TED BAKER<sup>®</sup>  
LONDON

**MISS SIXTY**

**VERO MODA**

HENRI  LLOYD

*Hooch*

**Bench.**

*Henleys*

**DUCK AND COVER** 

**JACK - JONES**

**BANK**

[www.bankfashion.co.uk](http://www.bankfashion.co.uk)

25/27 Chestergate, Macclesfield

*Anthony's Travel* ...Simply the Best



**01928 561460**

**Mark Findlow & Co**  
Solicitors



**Specialists in residential  
and commercial conveyancing,  
wills and probate.**

**E-mail: [mail@markfindlow.co.uk](mailto:mail@markfindlow.co.uk)  
Tel: 01625 617306  
Fax: 01625 430400  
or visit [www.markfindlow.co.uk](http://www.markfindlow.co.uk)**

## **M.T.F.C. COMMERCIAL OPPORTUNITIES**

### **MATCH SPONSORSHIP**

**£850 plus VAT**

- Eight x diners \*
- Eight x programmes
- Programme acknowledgement
- Scoreboard acknowledgement
- PA recognition
- Presentation of memento in recognition of support
- 40 match tickets for the community

- 10% discount on Mclroy Suite Room Hire / Daily Delegate Rates for a future occasion

### **MATCHBALL SPONSORSHIP**

**£325 plus VAT**

- Four x diners \*
- Four x programmes
- Programme acknowledgement
- Scoreboard acknowledgement

- Presentation of signed matchball
- PA recognition
- 20 match tickets for the community
- 10% discount on Mclroy Suite Room Hire / Daily Delegate Rates for a future occasion

### **MAN OF THE MATCH SPONSORSHIP**

**£325 plus VAT**

- Four x diners \*
- Four x programmes
- Programme acknowledgement
- Scoreboard acknowledgement
- Selection of Man of the Match and presentation of award to player
- PA recognition
- 20 match tickets for the community
- 10% discount on Mclroy Suite Room Hire / Daily Delegate Rates for a future occasion

### **PROGRAMME SPONSORSHIP**

**£175 plus VAT**

- Two x diners \*
- Two x programmes
- Programme acknowledgement
- Scoreboard acknowledgement
- PA recognition
- 10 match tickets for the community
- 10% discount on Mclroy Suite Room Hire / Daily Delegate Rates for a future occasion



**FOR DETAILS RING JEF TYLER ON 01625 264727**



Paul Ince



is sponsored by...  
**BARRIE DARCEY**

Paul Lake



is sponsored by...  
**ANDY &  
JEAN RIDGWAY**

Jon Brain



is sponsored by...  
**MARGARET  
& BILL MILLIGAN**

Martin Bullock



is sponsored by...  
**www.astm.me.uk**

Tommy Lee



is sponsored by...  
**BOSLEY  
SUPPORTERS CLUB**

Kevin McIntyre



is sponsored by...  
**ROGER &  
LINDA O'BRIEN**

Matt McNeil



**JOHN &  
JENNY SAXON**

John Miles



is sponsored by...  
**BEN &  
CHRIS MCNUITY**

Danny Swailes



is sponsored by...  
**THE SANDERS  
FAMILY**

Alan Navarro



is sponsored by...  
**SCANDINAVIAN  
SILKMEN**

Carl Regan



is sponsored by...  
**AVAILABLE FOR  
SPONSORSHIP**

Andrew Smart



is sponsored by...  
**MACCLESFIELD  
TOWN LADIES FC**

David Morley



is sponsored by...  
**STEVE AND  
ARIANE BOYD**

Colin Heath



is sponsored by...  
**AVAILABLE FOR  
SPONSORSHIP**

Jamie Tolley



is sponsored by...  
**THE 50/50 TEAM**

Marvin McDonald



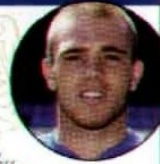
is sponsored by...  
**AVAILABLE FOR  
SPONSORSHIP**

Izak Reid



is sponsored by...  
**AVAILABLE FOR  
SPONSORSHIP**

Jordan Hadfield



is sponsored by...  
**NOVA PHOCUS  
TRADING**

Andrew Teague



is sponsored by...  
**ELLIE BRIGGS**

James Jennings



is sponsored by...  
**AVAILABLE FOR  
SPONSORSHIP**

Ian Brightwell



is sponsored by...  
**THE JEAVONS  
FAMILY**

Jimmy McNulty

is sponsored by...  
**AVAILABLE FOR  
SPONSORSHIP**

**OTHER AVAILABLE  
PLAYERS ARE: MATTHEW  
TIPTON, ROB SCOTT AND  
SPENCER WEIR-DALEY  
ALL AWAY KITS ARE CURRENTLY  
AVAILABLE FOR SPONSORSHIP**

**WANT TO SPONSOR  
YOUR FAVOURITE  
PLAYER?**

Please contact MTFC on  
01625 264686 for more  
details.

# keep up to date!

## LEAGUE TABLE

### COCA-COLA FOOTBALL LEAGUE TWO LATEST STANDINGS

	P	W	D	L	F	A	W	D	L	F	A	Gd	Pt
Walsall	22	9	1	1	21	3	5	5	1	14	10	22	48
<b>SWINDON TOWN</b>	<b>22</b>	<b>7</b>	<b>1</b>	<b>3</b>	<b>16</b>	<b>9</b>	<b>6</b>	<b>3</b>	<b>2</b>	<b>14</b>	<b>9</b>	<b>12</b>	<b>43</b>
Milton Keynes Dons	22	7	1	3	19	13	6	2	3	20	16	10	42
Lincoln City	22	6	2	3	23	14	7	0	4	20	14	15	41
Wycombe Wanderers	22	6	4	1	15	7	5	1	5	11	12	7	38
Peterborough United	22	5	2	4	25	21	6	3	2	8	7	5	38
Hartlepool United	22	5	3	3	12	8	5	2	4	16	14	6	35
Notts County	22	4	3	4	11	11	5	4	2	17	13	4	34
Bury	22	4	2	5	15	15	6	0	5	14	12	2	32
Chester City	22	5	3	3	15	10	3	3	5	11	12	4	30
Darlington	22	5	3	3	14	12	3	3	5	14	17	-1	30
Shrewsbury Town	21	4	4	2	18	10	3	4	4	15	13	10	29
Stockport County	22	6	2	3	19	13	2	3	6	8	15	-1	29
Hereford United	22	5	3	3	12	8	3	2	6	12	19	-3	29
Bristol Rovers	22	6	2	3	10	7	2	2	7	8	17	-6	28
Grimsby Town	22	5	2	4	15	17	2	3	6	8	18	-12	26
Barnet	22	4	3	4	18	20	2	4	5	11	17	-8	25
Mansfield Town	22	5	3	3	19	15	1	3	7	8	19	-7	24
Wrexham	21	5	4	2	14	8	1	2	7	7	26	-13	24
Boston United	22	4	3	4	16	13	2	2	7	14	24	-7	23
Accrington Stanley	22	4	3	4	21	18	1	4	6	15	23	-5	22
Rochdale	22	2	3	6	7	13	3	2	6	14	16	-8	20
Torquay United	22	2	4	5	6	10	2	4	5	12	18	-10	20
<b>MACCLESFIELD TOWN</b>	<b>22</b>	<b>1</b>	<b>4</b>	<b>6</b>	<b>17</b>	<b>23</b>	<b>1</b>	<b>4</b>	<b>6</b>	<b>7</b>	<b>17</b>	<b>-16</b>	<b>14</b>

## FORTHCOMING FIXTURES

### COCA-COLA FOOTBALL LEAGUE TWO FIXTURES

#### TODAY

Boston United v Walsall  
 Bristol Rovers v Accrington Stanley  
 Bury v Hartlepool United  
 Macclesfield Town v Swindon Town  
 Milton Keynes Dons v Rochdale  
 Peterborough United v Lincoln City  
 Shrewsbury Town v Barnet  
 Wrexham v Darlington  
 Wycombe Wanderers v Stockport County

#### TUESDAY 26TH DECEMBER 2006

Accrington Stanley v Bury  
 Barnet v Peterborough United  
 Chester City v Macclesfield Town  
 Darlington v Mansfield Town  
 Hartlepool United v Grimsby Town  
 Hereford United v Bristol Rovers  
 Lincoln City v Boston United  
 Rochdale v Wrexham  
 Stockport County v Notts County  
 Swindon Town v Wycombe Wanderers  
 Torquay United v Milton Keynes Dons  
 Walsall v Shrewsbury Town

## MACCLESFIELD TOWN

Date	Opposition	Venue	Res	Att (Away)	Pos
Sat Aug 5	Darlington	A	L0-4	4,095 (180)	24
Tue Aug 8	Hartlepool United	H	D0-0	1,473 (370)	17
Sat Aug 12	MK Dons	H	L1-2	1,448 (263)	21
Sat Aug 19	Peterborough United	A	L1-3	4,136 (140)	22
Tue Aug 22	Leicester City (CC1)	A	L0-2	6,298 (248)	-
Sat Aug 26	Wycombe Wanderers	H	L0-2	1,574 (267)	24
Fri Sep 1	Grimsby Town	A	D1-1	3,638 (48)	24
Sat Sep 9	Barnet	H	L2-3	1,770 (161)	24
Tue Sep 12	Lincoln City	A	L1-2	4,184 (tbc)	24
Sat Sep 16	Walsall	A	L0-2	4,657 (154)	24
Sat Sep 23	Torquay United	H	D3-3	1,836 (219)	24
Tue Sep 26	Chester City	H	D1-1	2,022 (602)	24
Sat Sep 30	Hereford United	A	L0-1	2,705 (tbc)	24
Sat Oct 7	Shrewsbury Town	A	L1-2	4,816 (194)	24
Sat Oct 14	Bury	H	L2-3	2,512 (782)	24
Tue Oct 17	Stockport County (JPT1)	H	L0-1	1,792 (967)	-
Sat Oct 21	Bristol Rovers	A	D0-0	5,130 (82)	24
Sat Oct 28	Mansfield Town	H	L2-3	2,599 (591)	24
Sat Nov 4	Wrexham	A	D0-0	3,568 (286)	24
Mon Nov 13	Walsall (FAC1)	H	D0-0	2,018 (405)	-
Sat Nov 18	Boston United	H	L2-3	1,895 (134)	24
Tue Nov 21	Walsall (FAC1R)	A	W1-0	3,114 (96)	-
Sat Nov 25	Stockport County	A	D1-1	6,575 (750)	24
Sat Dec 2	Hartlepool United (FAC2)	H	W2-1	1,992 (370)	-
Tue Dec 5	Rochdale	H	W1-0	1,472 (369)	24
Sat Dec 9	Notts. County	A	W2-1	4,036 (205)	24
Sat Dec 16	Accrington Stanley	H	D3-3	2,242 (224)	24
Sat Dec 23	Swindon Town	H			
Tue Dec 26	Chester City	A			
Sat Dec 30	Torquay United	A			
Mon Jan 1	Lincoln City	H			
Sat Jan 6	Chelsea (FAC3)	H			
Sat Jan 13	Barnet	A			
Sat Jan 20	Hereford United	H			
Sat Jan 27	Swindon Town	A		(F.A. Cup 4)	
Sat Feb 3	Darlington	H			
Sat Feb 10	MK Dons	A			
Sat Feb 17	Peterborough United	H		(F.A. Cup 5)	
Tue Feb 20	Hartlepool United	A			
Sat Feb 24	Grimsby Town	H			
Sat Mar 3	Wycombe Wanderers	A			
Sat Mar 10	Shrewsbury Town	H		(F.A. Cup 6)	
Sat Mar 17	Bury	A			
Fri Mar 23	Mansfield Town	A			
Sat Mar 31	Bristol Rovers	H			
Sat Apr 7	Wrexham	H			
Mon Apr 9	Boston United	A			
Sat Apr 14	Stockport County	H		(F.A. Cup Semi-Final)	
Sat Apr 21	Rochdale	A			
Sat Apr 28	Accrington Stanley	A			
Sat May 5	Notts. County	H			
TBA	Walsall	H			
Sat May 19	F.A. Cup Final				

Copyright © and Database Right 2006 The FA Premier League Ltd / The Football League Ltd. All rights reserved. Fixtures subject to change. Compiled in association with Atos Origin.

# who, where and when

## FC STATS AND FACTS - SEASON 2006/07

Lee	Regan	Morley	Swalles	McNulty	Bullock	Navarro*	Miles*	McIntyre	Robinson	McNeil.	Brain	Hadfield*	Heath**	Brightwell	Teague
Lee	Regan*	Morley	Swalles	McNulty	Bullock	Navarro*	Hadfield	McIntyre	Robinson	McNeil.	Brain	Miles	Heath**	Brightwell	Teague
Lee	Regan	Morley	Swalles	McNulty	Bullock	Tolley	Hadfield	<b>McIntyre</b>	Robinson*	McNeil.	Brain	Navarro	Heath*	Brightwell	Teague
Brain	Regan	Teague	<b>Swalles</b>	McNulty	Heath	Tolley*	Hadfield	McIntyre*	Robinson	McNeil.	Lee	Miles	Navarro*	Brightwell	McDonald
Brain	Regan*	Teague	Swalles	McNulty	Heath	Tolley	Navarro**	Miles	Robinson	Brightwell	Lee	Reid	Jacobs	Hadfield*	McDonald**
Brain	Bullock*	Teague	Swalles	McNulty	Heath*	Tolley**	Hadfield*	McNeil	Robinson***	Brightwell	Lee	Miles***	Jacobs	Regan*	Navarro**
Brain	Regan	<b>Teague</b>	Swalles	McNulty	Heath*	Tolley	Bullock	McNeil	Navarro*	Brightwell	Lee	Morley	Tipton*	Hadfield	Weir-Daley
Brain	Regan	Teague*	Swalles	McNulty	Scott	Tolley	Bullock	<b>McNeil</b>	<b>Tipton</b>	Navarro**	Lee	Morley	Weir-Daley**	Heath	McIntyre*
Lee	Brightwell***	Teague	Swalles	McNulty*	<b>Scott</b>	Morley**	Tolley	Weir-Daley	Tipton	McIntyre	Brain	Hadfield*	McNeil**	Heath	Bullock***
Lee	McIntyre	Teague	Swalles	Morley	Scott	Tolley	Hadfield*	Weir-Daley	Tipton	McNeil*	Brain	Navarro	Regan	Heath	Bullock*
Lee	McIntyre	Teague	<b>Swalles*</b>	<b>Morley</b>	Scott	Tolley	Hadfield	<b>Bullock</b>	Tipton	Miles*	Brain	Navarro	Regan	Heath*	McNulty
Lee	McIntyre	Teague	Swalles*	Morley	Scott*	Tolley	Hadfield	<b>Bullock</b>	Tipton	Miles	Brain	Navarro	Regan	Heath*	McNulty
Lee	Regan	Teague	Swalles	Morley	Scott	McNulty*	McIntyre	Bullock**	Tipton	Navarro	Brain	Hadfield	Miles**	Heath*	Smart
Lee	Tolley	Navarro	Swalles	Morley*	Scott*	McNulty	McIntyre	Bullock*	Tipton*	<b>Weir-Daley</b>	Brain	Miles*	Hadfield	Heath	Regan
Lee	Tolley	Navarro	Swalles	Morley	<b>Scott</b>	McNulty	McIntyre	Miles*	McNeil**	<b>Weir-Daley</b>	Brain	Teague	Hadfield*	Heath**	Regan
Brain	Hadfield**	Navarro*	Swalles	Morley	Scott	McNulty*	McIntyre	Tolley***	Heath	Weir-Daley	Lee	Teague***	Miles	McNeil*	Regan**
Brain*	Hadfield*	Navarro*	Swalles*	Morley	Scott*	Regan	McIntyre	Bullock	Tipton**	Weir-Daley*	Lee	Teague	Miles	McNeil*	Heath
Brain	Hadfield*	Navarro	Brightwell*	<b>Morley</b>	Scott	Regan	McIntyre	Bullock	Tipton**	<b>Heath***</b>	Lee	Teague*	Miles	Murphy**	Weir-Daley***
Brain	McNulty	Navarro	Swalles***	Morley*	Scott	Regan	McIntyre	Bullock	Tipton*	Heath**	Lee	Teague***	Wiles	Murphy*	McNeil**
Brain	Wiles**	Navarro*	Swalles	Morley*	Scott	Hadfield*	McIntyre	Bullock	Murphy	Heath***	Weir-Daley	Tolley**	Miles	McNulty*	McNeil***
Brain	Wiles	Navarro**	Swalles	McNulty	Scott*	Hadfield*	McIntyre	Tolley***	McNeil	<b>Heath*</b>	Lee	Weir-Daley	Teague*	<b>Regan**</b>	Bullock***
Brain	Wiles***	Navarro	Swalles	<b>McNulty</b>	Teague	Regan*	McIntyre	Tolley*	Heath**	Bullock	Reid	Miles	Hadfield*	McNeil**	Jennings**
Brain**	Wiles*	Navarro	Swalles	McNulty	Teague***	Regan	<b>McIntyre</b>	Hadfield*	McNeil	Bullock	Begovic**	Tolley	Scott****	Murphy*	Heath
Begovic	Tolley*	Navarro	Swalles	Hadfield	Scott	Regan	<b>McIntyre</b>	Bullock	McNeil*	<b>Murphy</b>	Smart	Miles	Reid	Jennings	Heath*
Begovic	Tolley	Navarro*	Swalles	Hadfield	Scott*	Regan	McIntyre	Bullock	<b>McNeil</b>	Murphy**	Cooper	Miles	Tipton	Jennings*	Heath**
Begovic	Tolley	<b>Heath</b>	Swalles*	Hadfield	Jennings	Regan*	<b>McIntyre</b>	Bullock	McNeil	Murphy**	Smart	Miles	Tipton	Reid	Jeffries
Lee	<b>Tolley</b>	Heath**	Swalles*	Hadfield	Jennings	Regan*	McIntyre	<b>Bullock</b>	McNeil*	<b>Murphy</b>	Smart	Miles**	Tipton*	Reid	Morley

### PLAYER OF THE MONTH AWARD

In association with A-Line Macclesfield Town have now launched the A-Line Player of the Month award. At the beginning of each calendar month a quick vote will be set up on the homepage, all we ask is that fans log on to the website and place their vote before the final match of that month.

Why not join in and help decide who deserves this prestigious accolade?



THE  
TYTHERINGTON  
CLUB

# Health & Golf Club Memberships available\*



**CALL 01625 506 000**

*Memberships to suit your lifestyle*



THE  
TYTHERINGTON  
CLUB

**The Tytherington Club**

Dorchester Way, Tytherington, Macclesfield, Cheshire SK10 2JP

Tel: 01625 506 000 Fax: 01625 506 040

email: [tytherington.sales@theclubcompany.com](mailto:tytherington.sales@theclubcompany.com)

[www.theclubcompany.com](http://www.theclubcompany.com)

\*Terms and conditions apply.

## ON THE ROAD

### COCA-COLA LEAGUE TWO

#### TORQUAY UNITED v MACCLESFIELD TOWN

Saturday 30th December 2006. Kick-Off 3.00pm

After the visit to Chester on Boxing Day, which was covered in the last programme, we head to Devon for our longest trip of the season, 488 miles if you want to count them. Torquay have struggled of late but will be hoping to end the year in style. 219 Gulls' fans made the trip to the Moss Rose in September to witness the 3-3 draw. Our goals came from Swales, Morley and Bullock.



#### THE TOWN...

There are probably better times of year to visit the English Riviera but the town and surrounding area still has a lot to offer those looking for a mid-winter break. Many will no doubt look to make a long weekend, and perhaps take in many of the coastal paths along the Devon coast.

#### THE GROUND...

Plainmoor by name, plain by nature although the ground has steadily improved over the years. Differing from other clubs, the Directors Box is situated behind one goal, in the Westward Family Stand, rather than being to the side of the pitch. This is a neat, attractive, covered all seater stand. The other end is a small covered terrace, built in 2000 to replace a former open terrace. It also boosted the atmosphere within the ground.

Both sides are covered stands. At one side is the covered, seated Main Stand, with a small amount of terracing to the front. It runs for just over half the length of the pitch. The other side is a newish, small covered terrace, called the Carlsberg Popular Terrace. It looks slightly odd, having a television gantry perched on its roof.

#### CONTACT DETAILS...

Telephone: 01803 328666  
Website: [www.torquayunited.com](http://www.torquayunited.com)

#### ADMISSION PRICES...

##### Main Stand (Seating):

Adults £14, OAP's £11, Under 16's £5

##### Sparkworld Stand (Terrace)

Adults £14, OAP's £11, Under 16's £5

#### CURRENT HOME FORM...

You have to go back into the middle of September and the visit of Mansfield Town for Torquay's last home victory. In the following six games the Gulls have scored just once, and picked up two points. The natives are sure to be restless!

**Beaten:** Rochdale (1-0), Mansfield (1-0).

**Drawn with:** Chester (2-2), Bristol R (0-0), Shrewsbury T (0-0), Wrexham (1-1).

**Lost to:** Lincoln (1-2), Notts Co (0-1), Accrington (0-2), Swindon (0-1), Boston (0-1).

#### GETTING THERE...

Unless you plan to travel the night before please allow plenty of time for the journey.

**BY ROAD:** At the end of the M5 follow the A38 and then turn left onto the A380. On reaching Kingskerwell, take the first exit at the large roundabout (where is a McDonalds & Sainsburys on one side) onto the A3022 towards Torquay. After one mile turn left towards Babbacombe (signposted Babbacombe (A379)). After 1 mile turn left into Westhill Road for Warbro Road. Torquay United is signposted on nearing the ground. Ample street parking in the area.

**BY RAIL:** Train is only really an option if you plan to travel back on the Sunday. The ground is a good two miles walk from the station or a £4 taxi fare. Call 08457 484950 for details of train times and fares.

## NEXT HERE...



### MACCLESFIELD TOWN v LINCOLN CITY

#### Coca-Cola League Two

Monday 1st January 2007 K.O. 3.00pm

Lincoln City are our next visitors for the first game of 2007. We visited Sincil Bank back in September and were unlucky to lose 2-1 despite having most of the play in the second half. Rob Scott got the goal which was watched by a crowd of 4,184.

*Last six League games:*

WLWLLL

*Festive fixtures:*

The Imps have a tricky local derby at Peterborough to contend with today before entertaining their nearest rivals Boston United on Boxing Day. Another tough test awaits for them on the Saturday before New Year when Carling Cup heroes Wycombe Wanderers are in town.

*Away form:*

Lincoln won their first five league away games, scoring goals for fun. But they have stuttered of late, losing their last three games at Chester (4-1), Wrexham (2-1) and Stockport (2-0).

*One to watch*

#### JAMIE FORRESTER

Lincoln's front man, who joined the club in the summer from Bristol Rovers is in a rich vein of form, and with 14 goals heads the League Two scoring charts. The 5ft 7in forward more than makes up for his lack of height with a lot of pace and a clear eye for goal, scoring three hat-tricks this season already.

# ON THE PITCH...



## MACCLESFIELD TOWN

**MANAGER:** Paul Ince  
**COLOURS:** All Blue

	Pld	Goal
1. Jonathon <b>BRAIN</b> .....	<input type="checkbox"/>	<input type="checkbox"/>
2. Carl <b>REGAN</b> .....	<input type="checkbox"/>	<input type="checkbox"/>
3. Andrew <b>SMART</b> .....	<input type="checkbox"/>	<input type="checkbox"/>
4. David <b>MORLEY</b> .....	<input type="checkbox"/>	<input type="checkbox"/>
5. Danny <b>SWAILES</b> .....	<input type="checkbox"/>	<input type="checkbox"/>
6. Martin <b>BULLOCK</b> .....	<input type="checkbox"/>	<input type="checkbox"/>
7. Alan <b>NAVARRO</b> .....	<input type="checkbox"/>	<input type="checkbox"/>
8. Colin <b>HEATH</b> .....	<input type="checkbox"/>	<input type="checkbox"/>
9. Matthew <b>McNEIL</b> .....	<input type="checkbox"/>	<input type="checkbox"/>
10. John <b>MILES</b> .....	<input type="checkbox"/>	<input type="checkbox"/>
11. Jamie <b>TOLLEY</b> .....	<input type="checkbox"/>	<input type="checkbox"/>
12. Matthew <b>TIPTON</b> .....	<input type="checkbox"/>	<input type="checkbox"/>
13. Tommy <b>LEE</b> .....	<input type="checkbox"/>	<input type="checkbox"/>
14. Kevin <b>McINTYRE</b> .....	<input type="checkbox"/>	<input type="checkbox"/>
15. Ian <b>BRIGHTWELL</b> .....	<input type="checkbox"/>	<input type="checkbox"/>
16. Izak <b>REID</b> .....	<input type="checkbox"/>	<input type="checkbox"/>
17. Jordan <b>HADFIELD</b> .....	<input type="checkbox"/>	<input type="checkbox"/>
18. Andrew <b>TEAGUE</b> .....	<input type="checkbox"/>	<input type="checkbox"/>
19. James <b>JENINGS</b> .....	<input type="checkbox"/>	<input type="checkbox"/>
20. Marvin <b>McDONALD</b> .....	<input type="checkbox"/>	<input type="checkbox"/>
21. Jimmy <b>McNULTY</b> .....	<input type="checkbox"/>	<input type="checkbox"/>
22. Asmir <b>BEGOVIC</b> .....	<input type="checkbox"/>	<input type="checkbox"/>
23. Spencer <b>WEIR-DALEY</b> .....	<input type="checkbox"/>	<input type="checkbox"/>
24. Rob <b>SCOTT</b> .....	<input type="checkbox"/>	<input type="checkbox"/>
26. John <b>MURPHY</b> .....	<input type="checkbox"/>	<input type="checkbox"/>



## SWINDON TOWN

**MANAGER:** Paul Sturrock  
**COLOURS:** Red & White

	Pld	Goal
1. Peter <b>BREZOVAN</b> .....	<input type="checkbox"/>	<input type="checkbox"/>
2. Jack <b>SMITH</b> .....	<input type="checkbox"/>	<input type="checkbox"/>
3. Jamie <b>VINCENT</b> .....	<input type="checkbox"/>	<input type="checkbox"/>
4. Sofiene <b>ZAABOUB</b> .....	<input type="checkbox"/>	<input type="checkbox"/>
5. Jerel <b>IFIL</b> .....	<input type="checkbox"/>	<input type="checkbox"/>
6. Ady <b>WILLIAMS</b> .....	<input type="checkbox"/>	<input type="checkbox"/>
7. Gareth <b>WHALLEY</b> .....	<input type="checkbox"/>	<input type="checkbox"/>
8. Aaron <b>BROWN</b> .....	<input type="checkbox"/>	<input type="checkbox"/>
9. Christian <b>ROBERTS</b> .....	<input type="checkbox"/>	<input type="checkbox"/>
10. Lee <b>PEACOCK</b> .....	<input type="checkbox"/>	<input type="checkbox"/>
12. Ricky <b>SHAKES</b> .....	<input type="checkbox"/>	<input type="checkbox"/>
15. Andy <b>NICHOLAS</b> .....	<input type="checkbox"/>	<input type="checkbox"/>
18. Paul <b>EVANS</b> .....	<input type="checkbox"/>	<input type="checkbox"/>
19. Michael <b>POOK</b> .....	<input type="checkbox"/>	<input type="checkbox"/>
20. Royce <b>BROWNLIE</b> .....	<input type="checkbox"/>	<input type="checkbox"/>
21. Lukas <b>JUTKIEWICZ</b> .....	<input type="checkbox"/>	<input type="checkbox"/>
22. Blair <b>STURROCK</b> .....	<input type="checkbox"/>	<input type="checkbox"/>
23. Curtis <b>WESTON</b> .....	<input type="checkbox"/>	<input type="checkbox"/>
24. Ashan <b>HOLGATE</b> .....	<input type="checkbox"/>	<input type="checkbox"/>
25. Phil <b>SMITH</b> .....	<input type="checkbox"/>	<input type="checkbox"/>
27. Ben <b>WELLS</b> .....	<input type="checkbox"/>	<input type="checkbox"/>
28. Andy <b>CATON</b> .....	<input type="checkbox"/>	<input type="checkbox"/>
30. Leigh <b>HENRY</b> .....	<input type="checkbox"/>	<input type="checkbox"/>
34. Michael <b>TIMLIN</b> .....	<input type="checkbox"/>	<input type="checkbox"/>

## OFFICIALS

Referee:  
E. Ilderton  
Assistant:  
Mr C. Harwood  
Assistant:  
Mr I. Siddall  
Fourth Official:  
Mr O. Langford

## NEXT HERE...

v Lincoln City  
Coca-Cola League Two  
Monday 1st January 2007  
Kick-Off 3.00pm

## CHEER ON THE YOUTH TEAM!

v Everton  
F.A. Youth Cup Third Round  
Friday 5th January 2007  
Kick-Off 7.00pm



[www.a-lineshop.co.uk](http://www.a-lineshop.co.uk)



**CHESHIRE**  
BUILDING SOCIETY

***SPECIAL OFFER!***

***BUY A MTFC HOME SHIRT FOR  
£35 AND RECEIVE AN EXCLUSIVE  
MTFC UMBRELLA (WORTH £14.99)  
ABSOLUTELY FREE!***

***THIS OFFER IS ONLY AVAILABLE  
AT THE A-LINE ONLINE SHOP.***

Support your club and open a Silkmen Saver savings account



# Join the team!

Cheshire Building Society is delighted to offer you the opportunity to save with our **Silkmen Saver** and **Roary's Junior Silkmen Saver** accounts.

**Roary's Junior Silkmen Saver** account is for savers aged 18 or under.

And if you open an account before the **31 January 2007**, or are an existing account holder, you will be entered into a **FREE** prize draw with the chance to win one of these fantastic prizes:

- **A chance to be a registered member of the squad.** As a registered member you will receive a squad number, your name included in 'The Line-Ups' in the match day programme and your very own official Macclesfield Town football shirt.
- **The chance to be a 'Director' for a day**, this includes 2 tickets with hospitality and access to the Director's Lounge
- **A football shirt signed by the players**
- **A signed football**

Pick up a leaflet from the club shop or phone free on **0800 195 1514** for more information.

Full written details and Prize Draw rules are available on request.



## Opening an account is simple!

1. Visit your local branch or
2. Phone free on - **0800 195 1514**

Lines open 8am - 8pm weekdays, 9am - 4pm Saturdays. For security and training purposes, telephone calls may be monitored or recorded.

3. Alternatively visit us anytime online at **thecheshire.co.uk**

**Head Office:** Castle Street, Macclesfield SK11 6AF

Cheshire Building Society is authorised and regulated by the Financial Services Authority (registration number 206102). The Society represents only the Norwich Union Marketing Group members of which are also authorised and regulated by the Financial Services Authority. Designated investment products and services offered will relate only to the Society and Norwich Union Marketing Group.

# CHESHIRE

BUILDING SOCIETY

[thecheshire.co.uk](http://thecheshire.co.uk)